



Foothill-De Anza
Community College
2021 Districting

FOOTHILL+DE ANZA

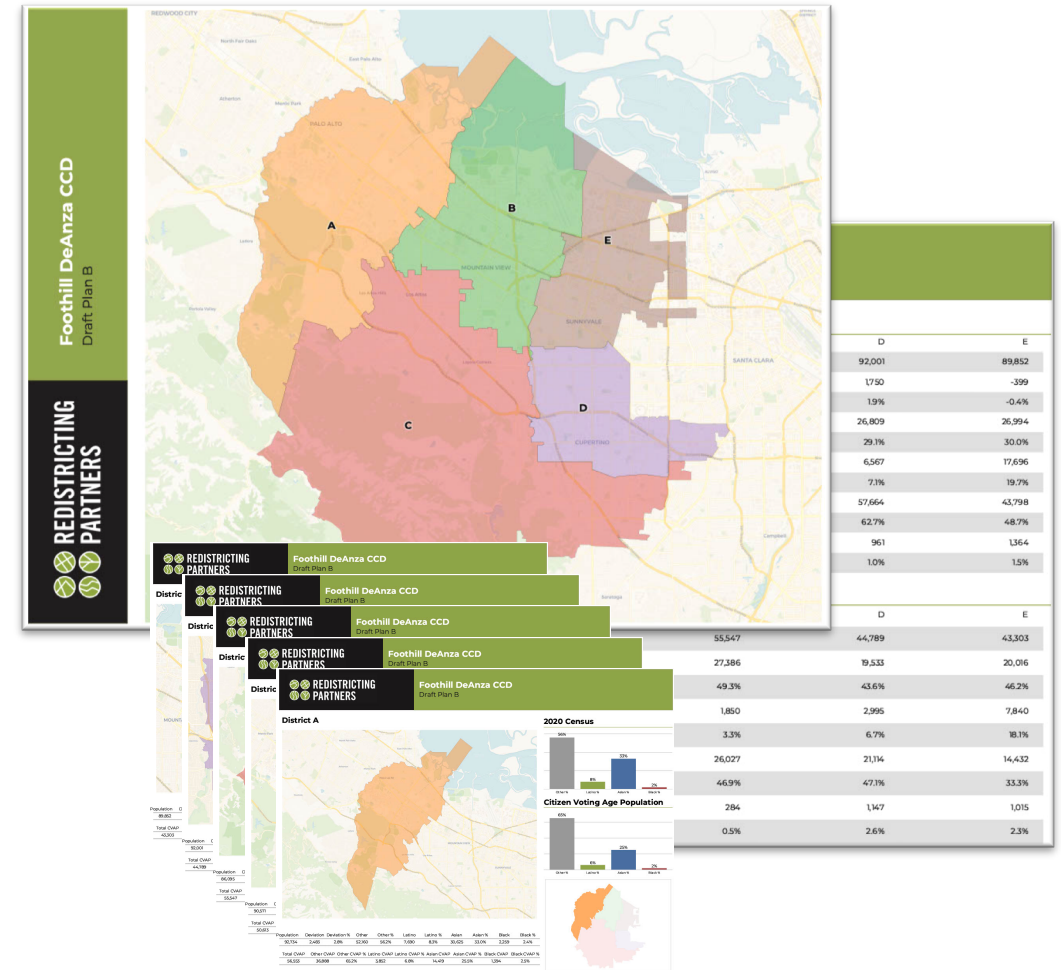
Your Colleges, Your Voice

Moving to Area Elections

Draft Map Plans

Each draft plan is provided with both a PDF and Online Web-based format

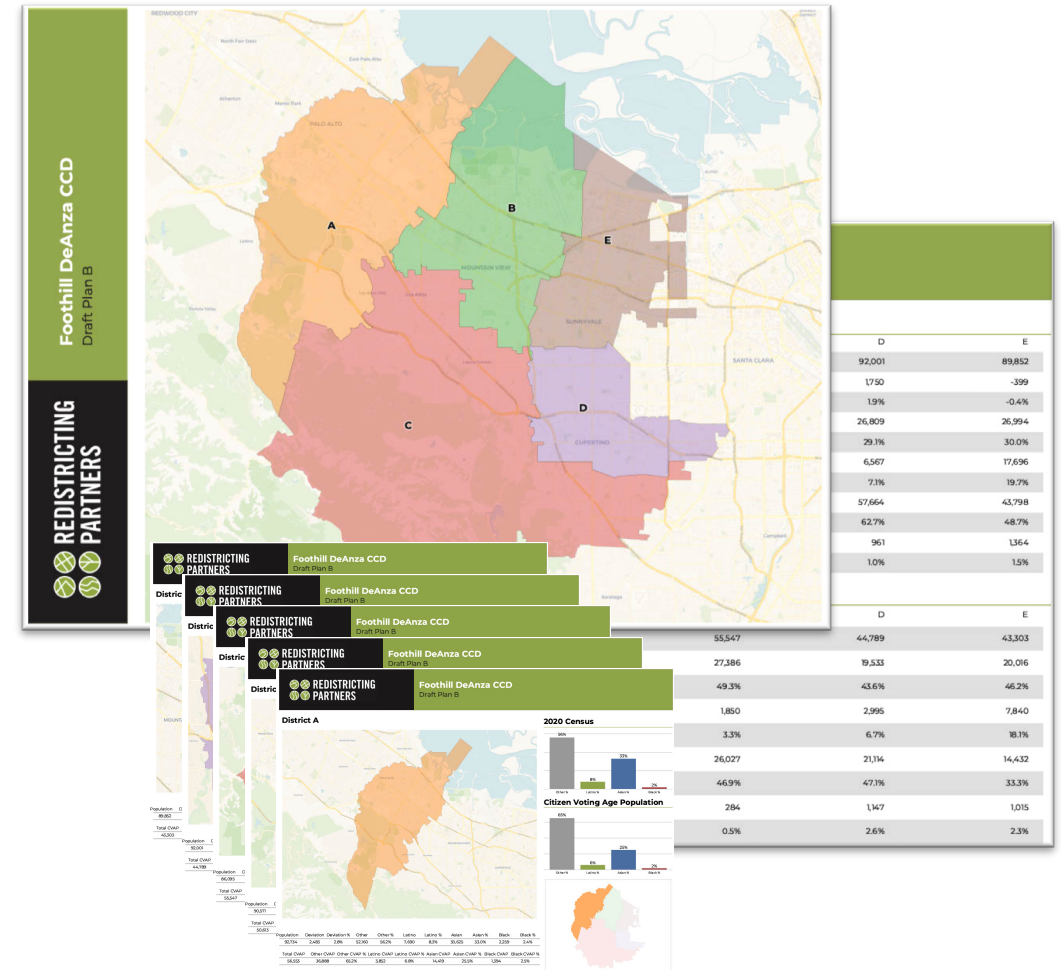
- **Draft Map A** – Based on Cities – keeping cities whole and balancing for population, compactness, other factors.
- **Draft Map C** – Based on School Districts – starting with school districts as the basis for each district, then balancing from there to reach population equality and meet other required criteria.

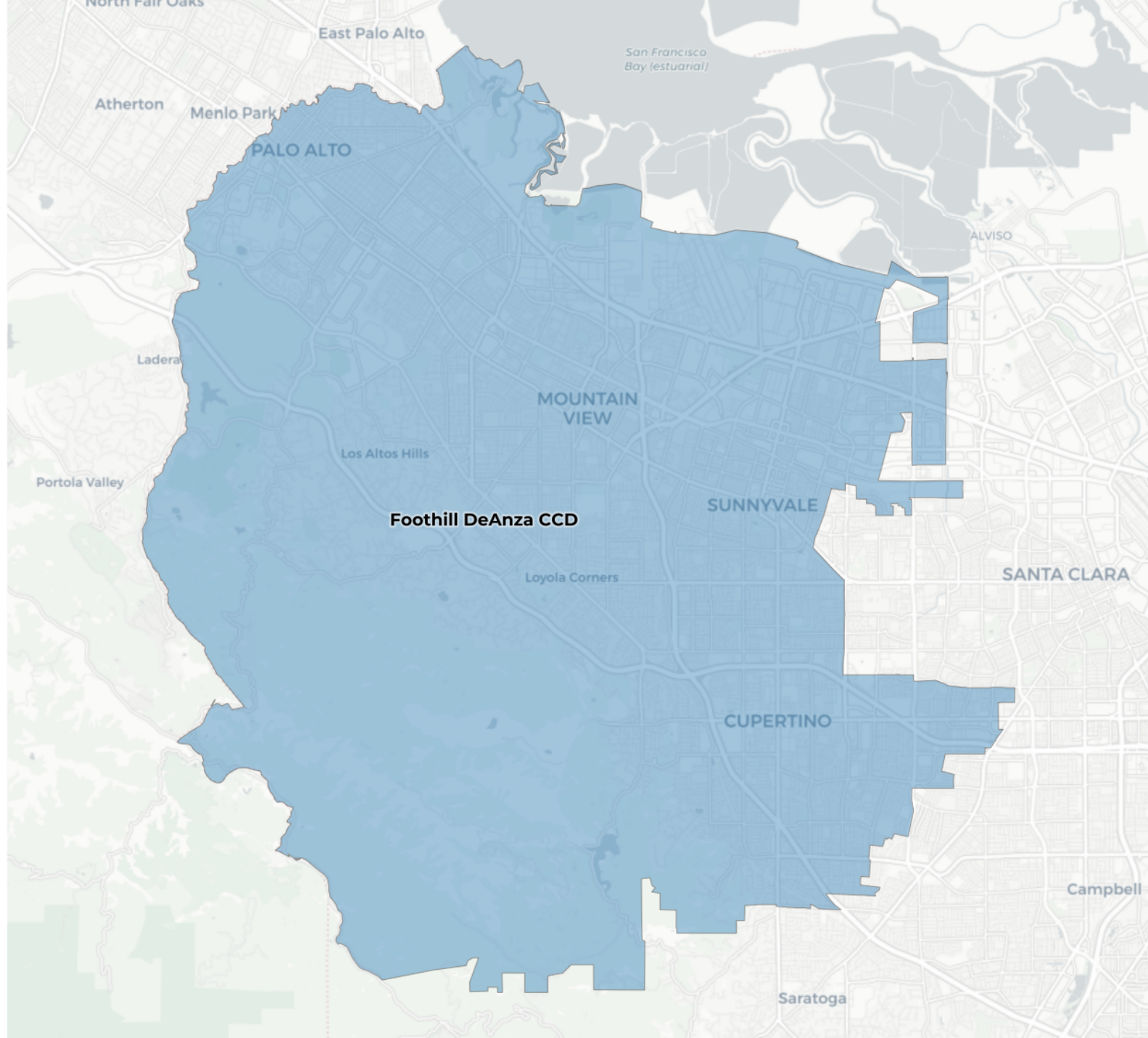


Drafts to Final Map

Today's hearing is an opportunity to take in public feedback and decide on a final direction for district maps that will be used for the next decade.

- Plans are based on public input and direction from the Board of Trustees.
- Plans follow the required criteria, VRA, Compactness, Contiguity, equal population, etc.





2020 Census

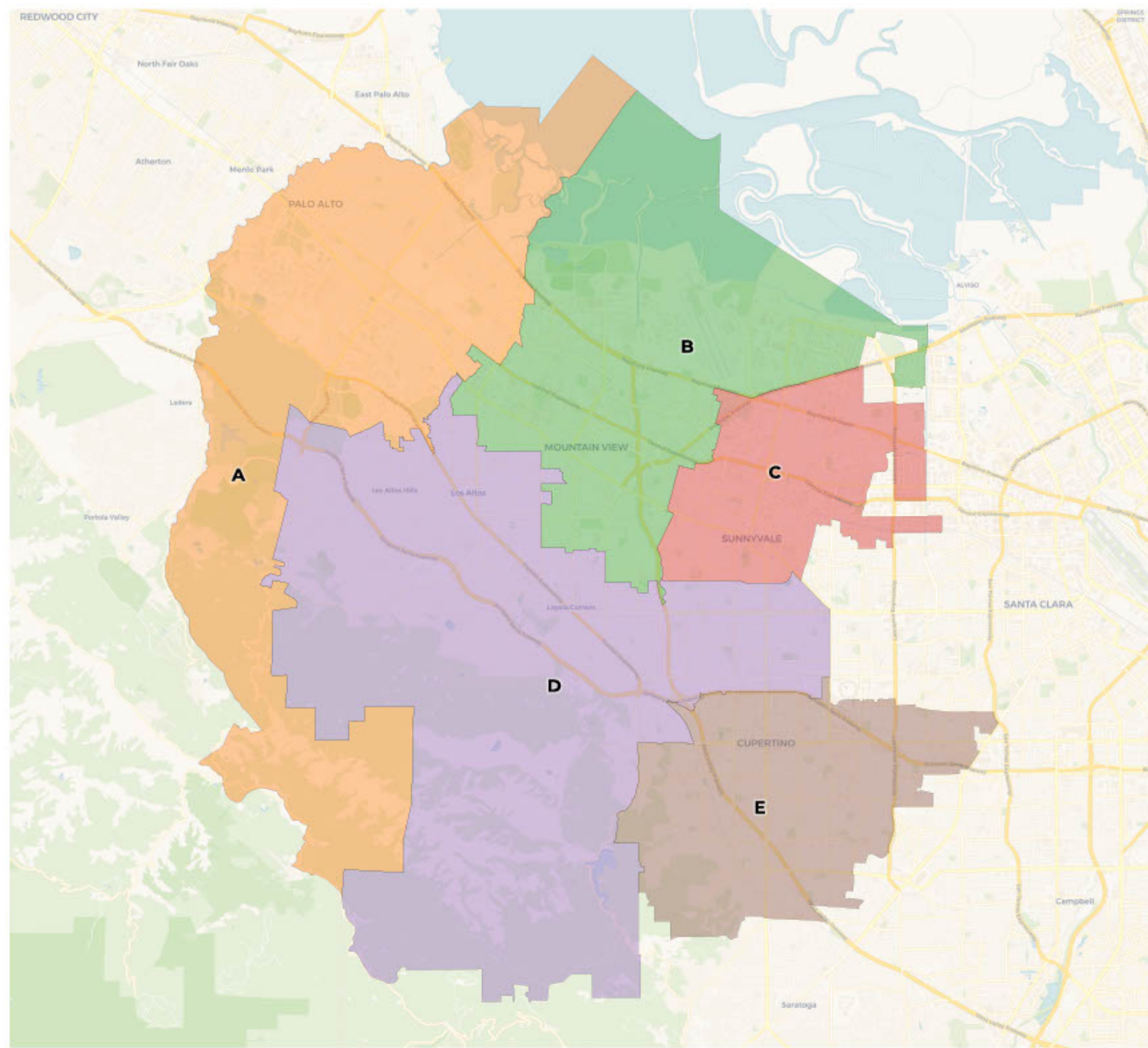
	Foothill DeAnza CCD
Population	450,373
Deviation	0
Deviation %	0.0%
Other	182,973
Other %	40.6%
Latino	49,946
Latino %	11.1%
Asian	211,147
Asian %	46.9%
Black	6,307
Black %	1.4%

Citizen Voting Age Population (CVAP)

	Foothill DeAnza CCD
Total CVAP	248,759
Other CVAP	134,070
Other CVAP %	53.9%
Latino CVAP	21,908
Latino CVAP %	8.8%
Asian CVAP	87,960
Asian CVAP %	35.4%
Black CVAP	4,821
Black CVAP %	1.9%



**Foothill DeAnza CCD
Draft Plan A**

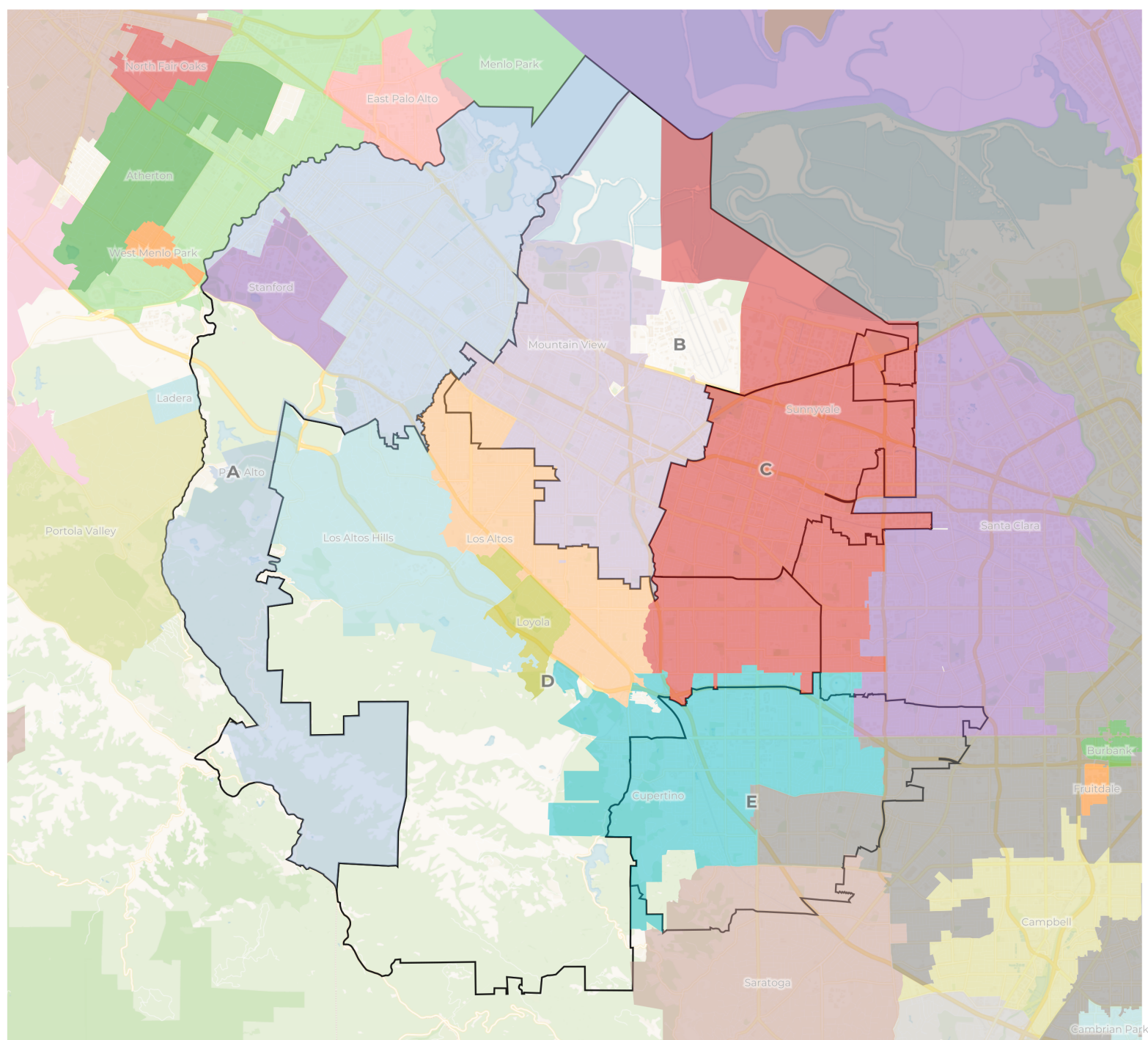




**REDISTRICTING
PARTNERS**

Foothill DeAnza CCD

Plan A - Cities Overlay

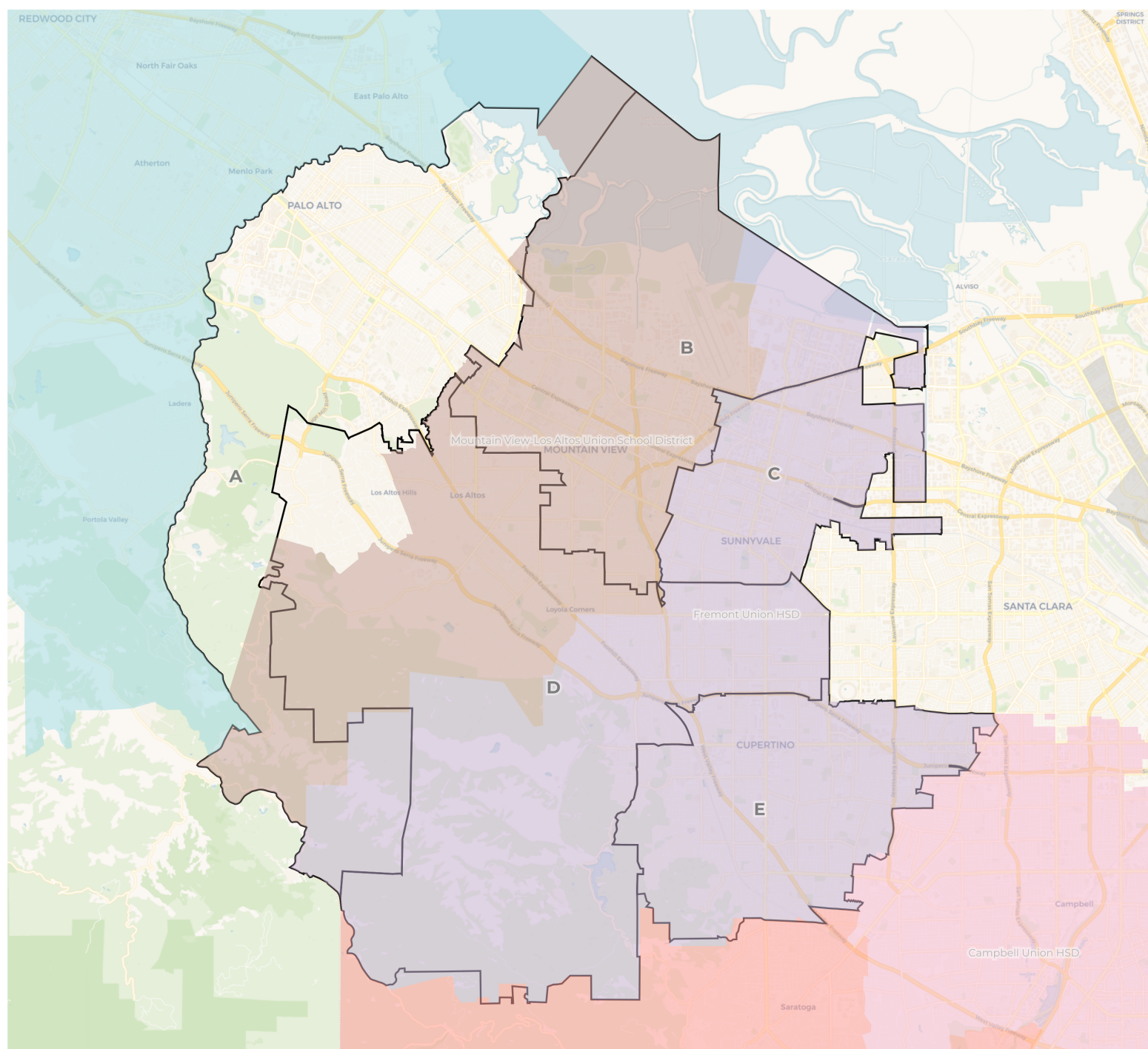


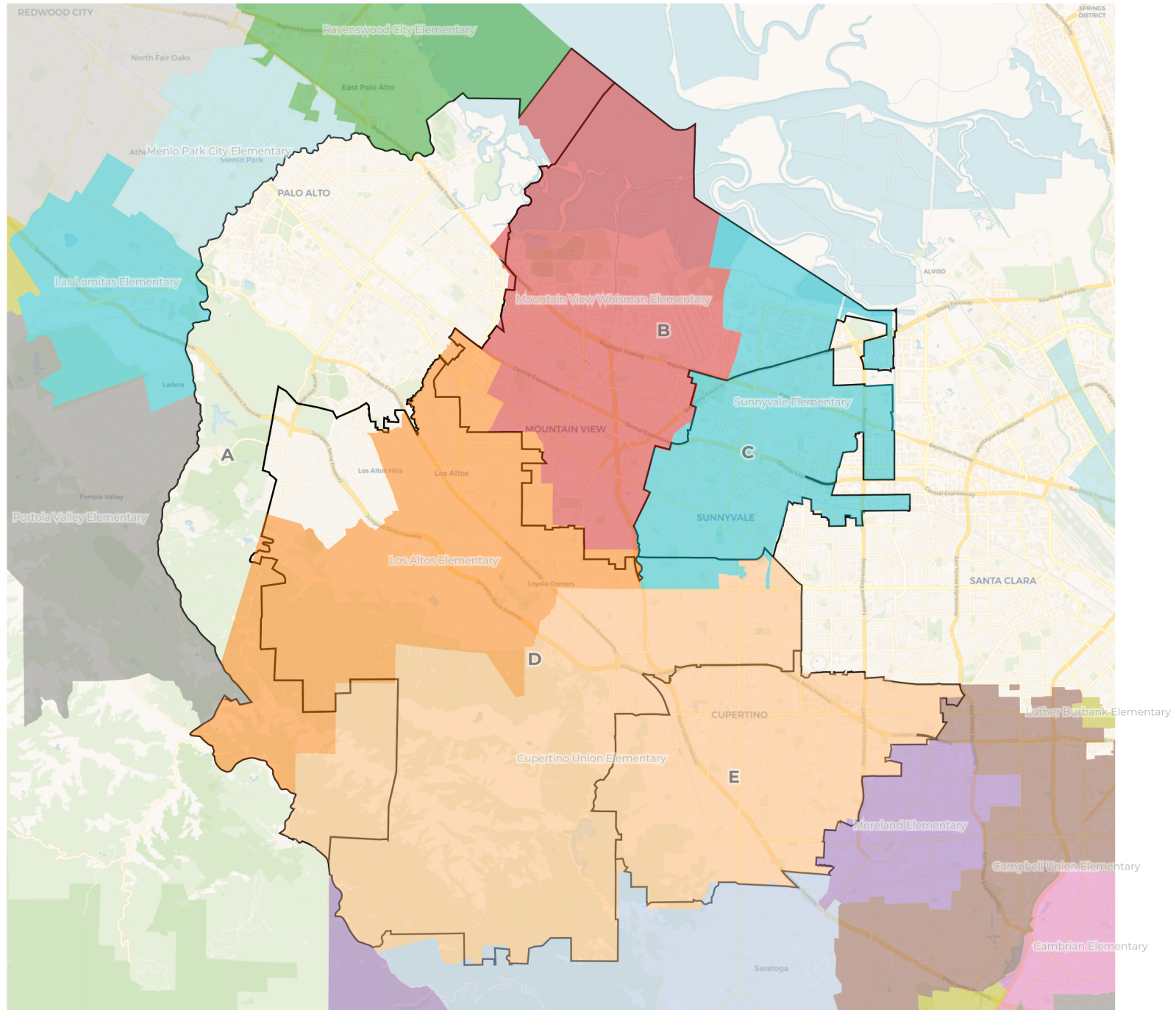


**REDISTRICTING
PARTNERS**

Foothill DeAnza CCD

Plan A - HSD Overlay



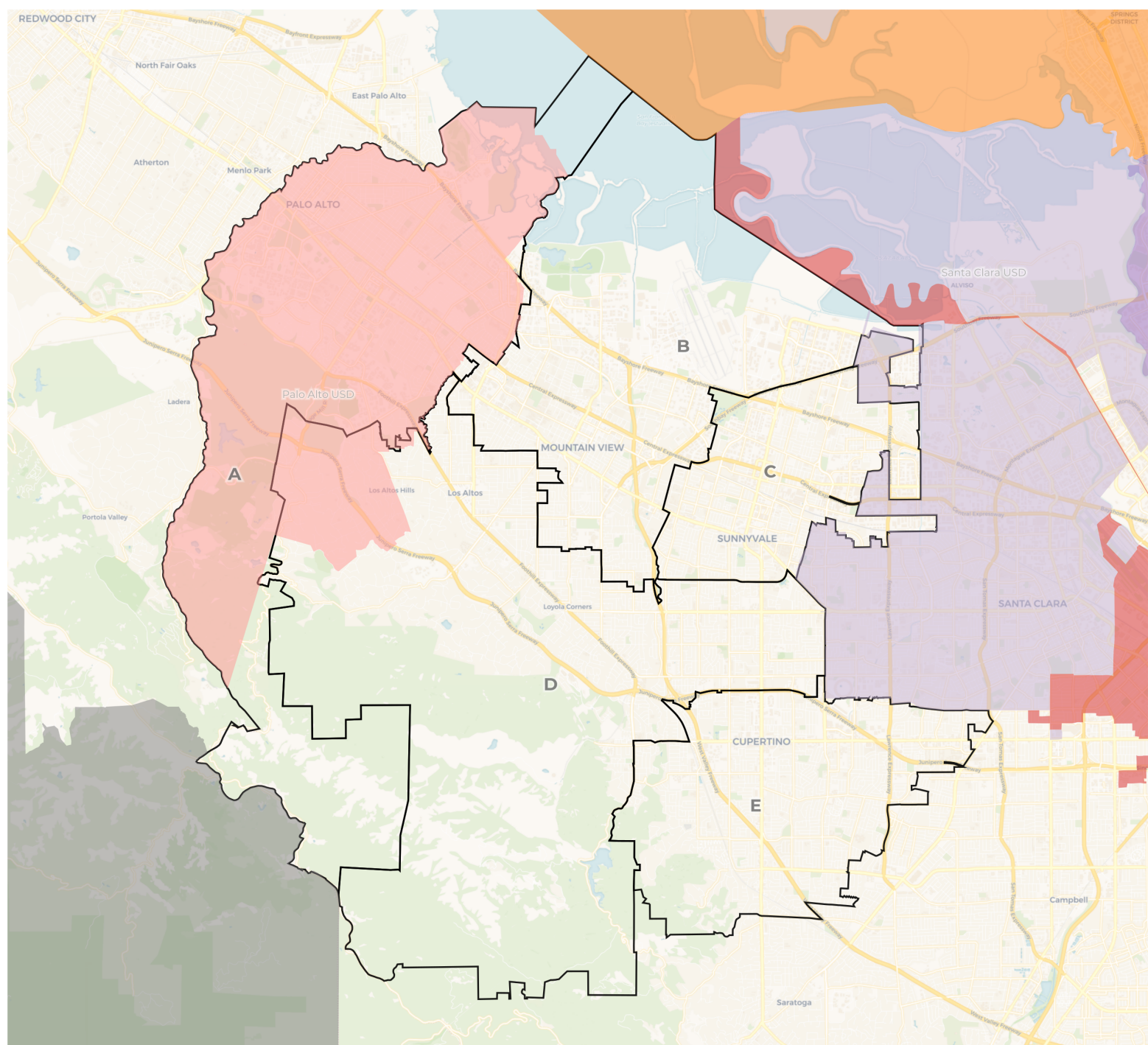




**REDISTRICTING
PARTNERS**

Foothill DeAnza CCD

Plan A - USD overlay



2020 Census

	A	B	C	D	E
Population	89,981	87,776	89,322	90,180	93,994
Deviation	-270	-2,475	-929	-71	3,743
Deviation %	-0.3%	-2.7%	-1.0%	-0.1%	4.1%
Other	50,668	41,122	26,876	42,881	21,702
Other %	56.3%	46.8%	30.1%	47.6%	23.1%
Latino	7,599	14,726	17,645	5,567	4,511
Latino %	8.4%	16.8%	19.8%	6.2%	4.8%
Asian	29,459	30,636	43,437	40,993	67,095
Asian %	32.7%	34.9%	48.6%	45.5%	71.4%
Black	2,255	1,292	1,364	739	686
Black %	2.5%	1.5%	1.5%	0.8%	0.7%

Citizen Voting Age Population (CVAP)

	A	B	C	D	E
Total CVAP	54,639	48,985	43,113	52,448	51,620
Other CVAP	35,736	29,603	19,894	31,284	18,135
Other CVAP %	65.4%	60.4%	46.1%	59.6%	35.1%
Latino CVAP	3,835	5,319	7,820	2,581	2,320
Latino CVAP %	7.0%	10.9%	18.1%	4.9%	4.5%
Asian CVAP	13,686	12,867	14,384	18,001	30,294
Asian CVAP %	25.0%	26.3%	33.4%	34.3%	58.7%
Black CVAP	1,382	1,196	1,015	582	871
Black CVAP %	2.5%	2.4%	2.4%	1.1%	1.7%

2020 Census

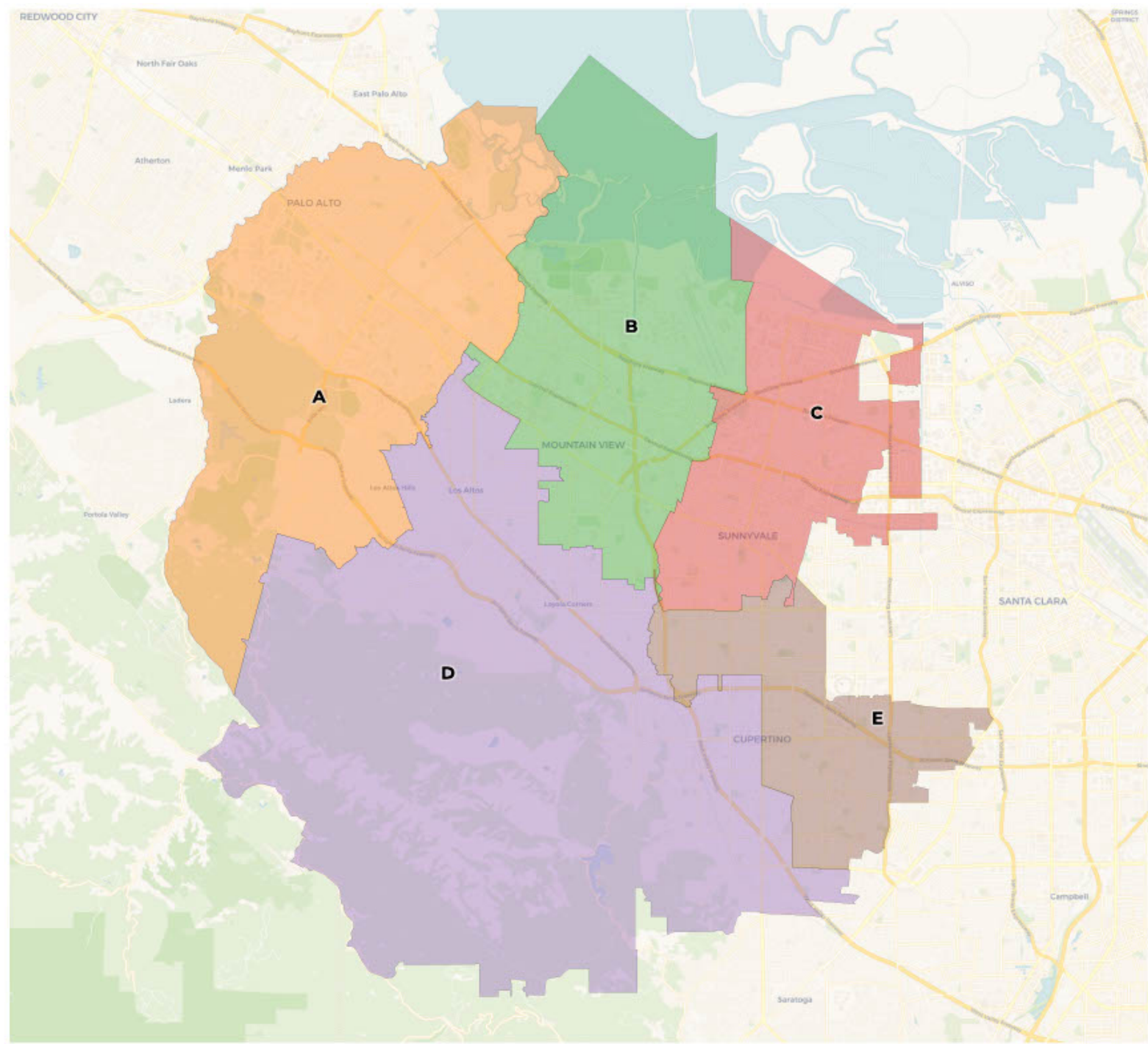
	A	B	C	D	E
Population	89,981	87,776	89,322	90,180	93,994
Deviation	-270	-2,475	-929	-71	3,743
Deviation %	-0.3%	-2.7%	-1.0%	-0.1%	4.1%
Other	50,668	41,122	26,876	42,881	21,702
Other %	56.3%	46.8%	30.1%	47.6%	23.1%
Latino	7,599	14,726	17,645	5,567	4,511
Latino %	Total Deviation of 6.8%				4.8%
Asian					67,095
Asian %	32.7%	34.9%	48.6%	45.5%	71.4%
Black	2,255	1,292	1,364	739	686
Black %	2.5%	1.5%	1.5%	0.8%	0.7%

Citizen Voting Age Population (CVAP)

	A	B	C	D	E
Total CVAP	54,639	48,985	43,113	52,448	51,620
Other CVAP	35,736	29,603	19,894	31,284	18,135
Other CVAP %	65.4%	60.4%	46.1%	59.6%	35.1%
Latino CVAP	3,835	5,319	7,820	2,581	2,320
Latino CVAP %	7.0%	10.9%	18.1%	4.9%	4.5%
Asian CVAP	13,686	12,867	14,384	18,001	30,294
Asian CVAP %	25.0%	26.3%	33.4%	34.3%	58.7%
Black CVAP	1,382	1,196	1,015	582	871
Black CVAP %	2.5%	2.4%	2.4%	1.1%	1.7%



**Foothill DeAnza CCD
Draft Plan C**

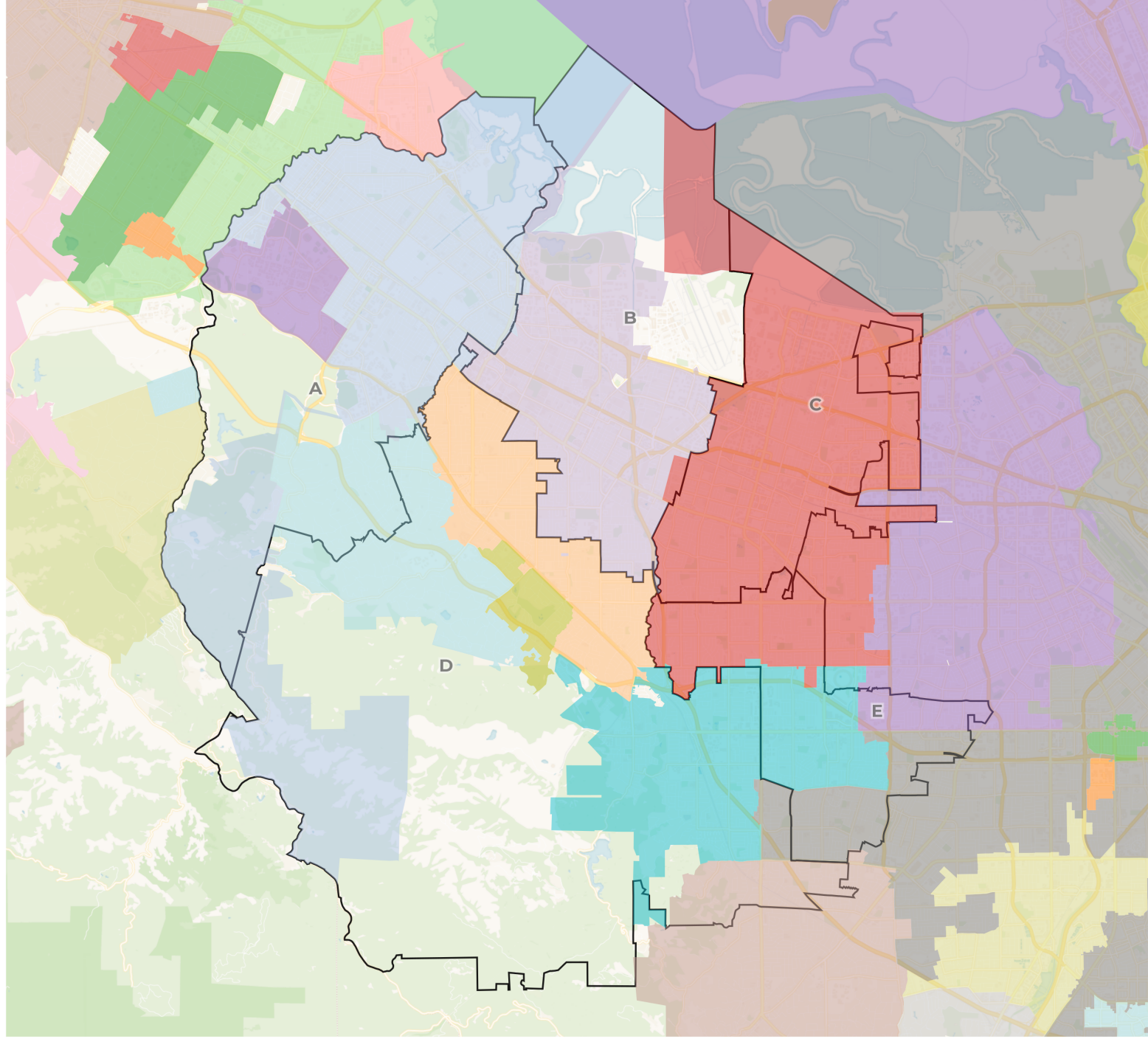




**REDISTRICTING
PARTNERS**

Foothill DeAnza CCD

Plan C - Cities Overlays

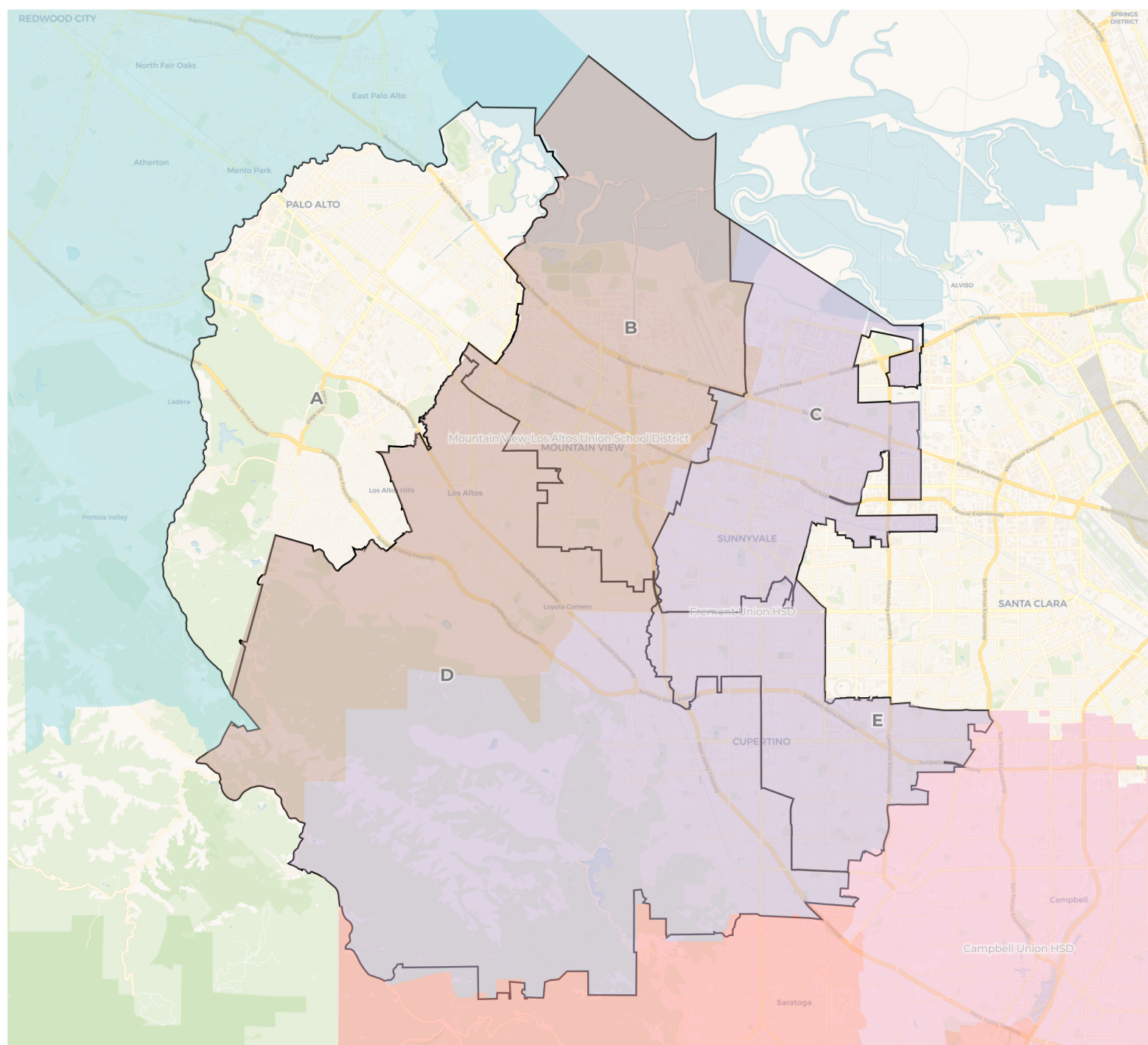




**REDISTRICTING
PARTNERS**

Foothill DeAnza CCD

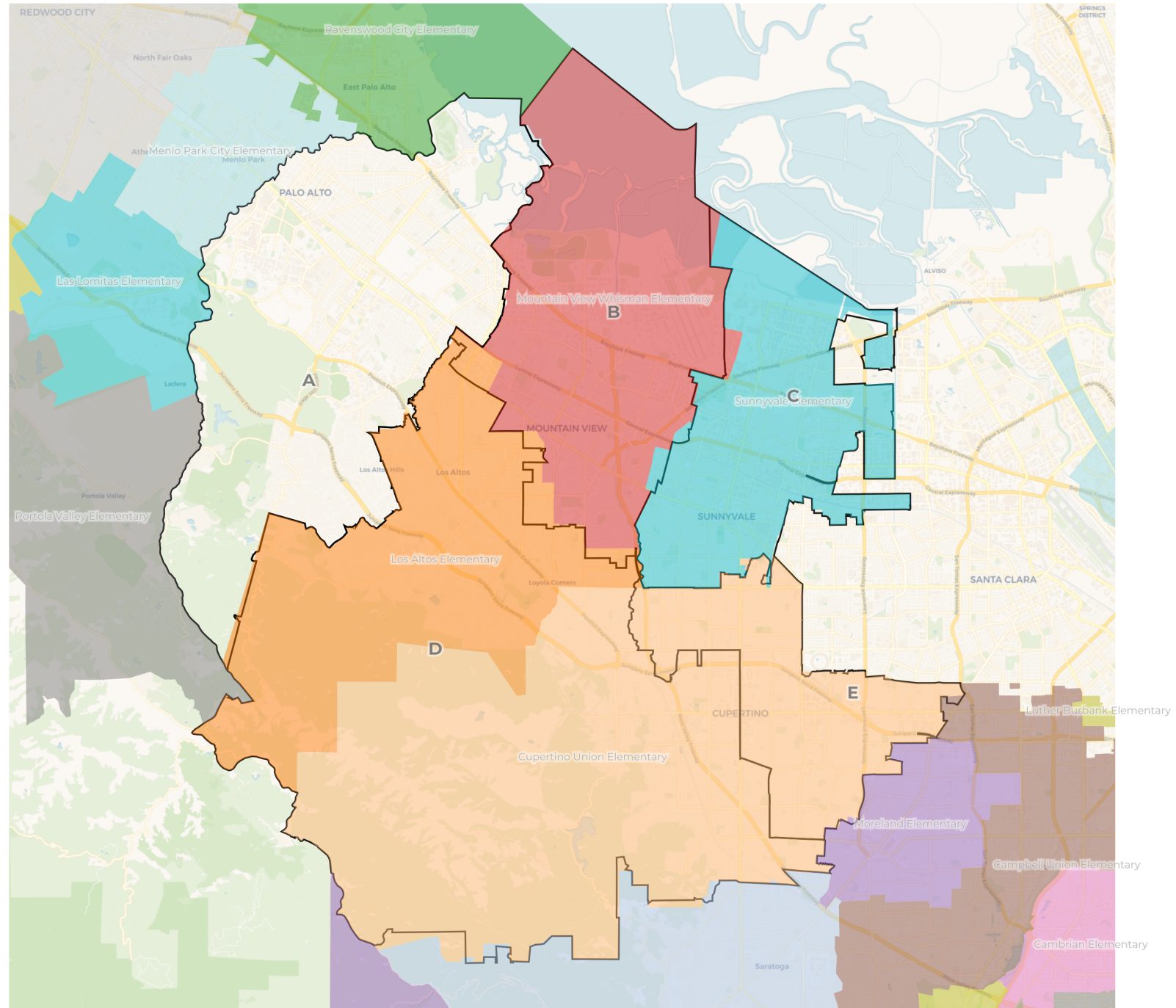
Plan C - HSD Overlay





**REDISTRICTING
PARTNERS**

Foothill DeAnza CCD
Draft Plan C - Elementary Dist

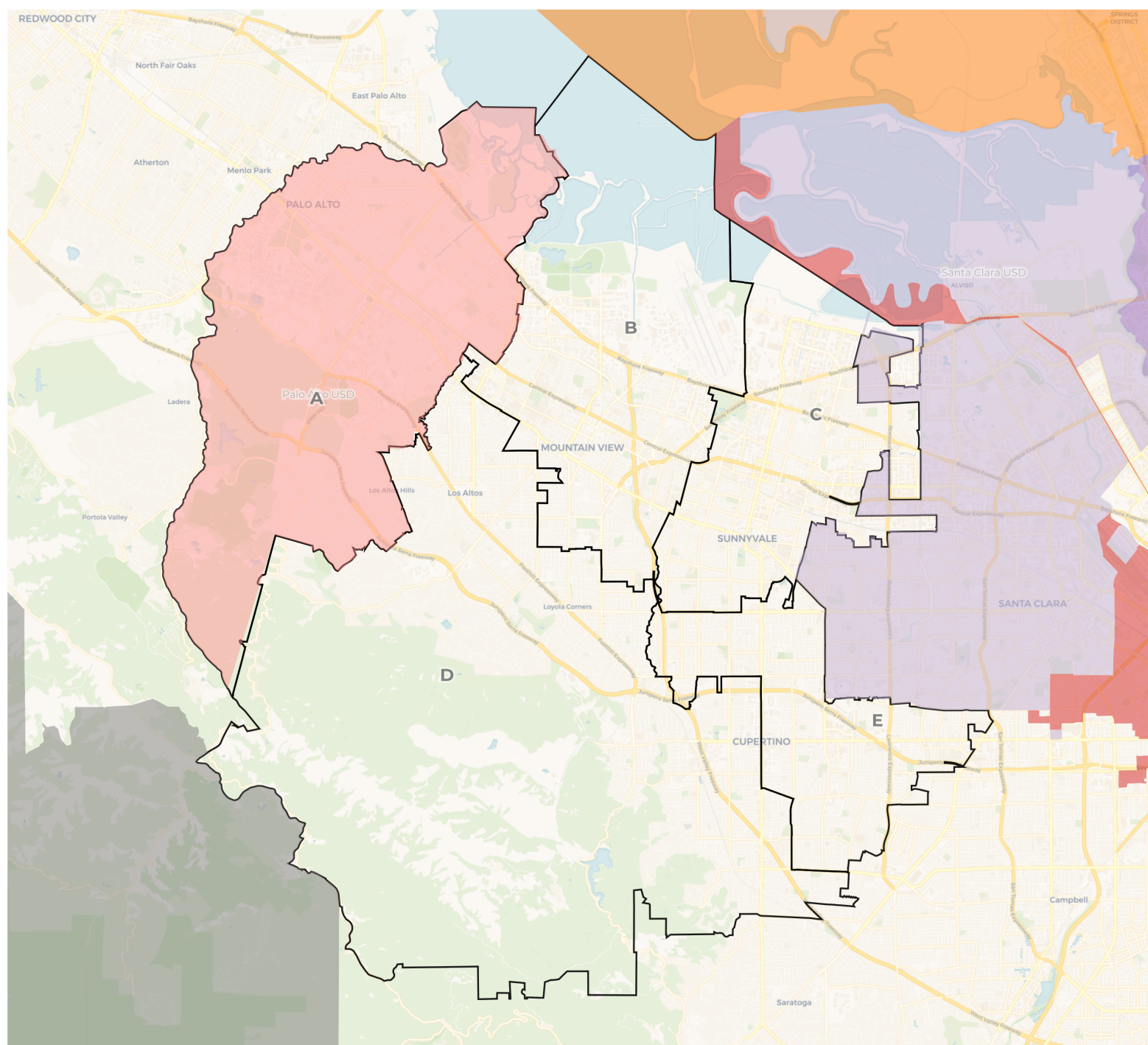




**REDISTRICTING
PARTNERS**

Foothill DeAnza CCD

Plan C - USD Overlay



2020 Census

	A	B	C	D	E
Population	92,289	88,737	91,624	91,113	87,490
Deviation	2,038	-1,514	1,373	862	-2,761
Deviation %	2.3%	-1.7%	1.5%	1.0%	-3.1%
Other	52,007	40,152	28,637	37,856	24,597
Other %	56.4%	45.2%	31.3%	41.5%	28.1%
Latino	7,617	15,900	16,971	3,729	5,831
Latino %	8.3%	17.9%	18.5%	4.1%	6.7%
Asian	30,437	31,331	44,634	49,011	56,207
Asian %	33.0%	35.3%	48.7%	53.8%	64.2%
Black	2,228	1,354	1,382	517	855
Black %	2.4%	1.5%	1.5%	0.6%	1.0%

Citizen Voting Age Population (CVAP)

	A	B	C	D	E
Total CVAP	56,285	48,724	44,920	56,157	44,719
Other CVAP	36,744	29,318	21,093	29,250	18,247
Other CVAP %	65.3%	60.2%	47.0%	52.1%	40.8%
Latino CVAP	3,829	5,558	7,853	1,918	2,777
Latino CVAP %	6.8%	11.4%	17.5%	3.4%	6.1%
Asian CVAP	14,334	12,623	14,969	24,677	22,629
Asian CVAP %	25.5%	25.9%	33.3%	43.9%	50.6%
Black CVAP	1,378	1,225	1,005	312	1,126
Black CVAP %	2.4%	2.5%	2.2%	0.6%	2.5%

2020 Census

	A	B	C	D	E
Population	92,289	88,737	91,624	91,113	87,490
Deviation	2,038	-1,514	1,373	862	-2,761
Deviation %	2.3%	-1.7%	1.5%	1.0%	-3.1%
Other	52,007	40,152	28,637	37,856	24,597
Other %	56.4%	45.2%	31.3%	41.5%	28.1%
Latino	7,617	15,900	16,971	3,729	5,831
Latino %	Total Deviation of 5.4%				6.7%
Asian					56,207
Asian %	33.0%	35.3%	48.7%	53.8%	64.2%
Black	2,228	1,354	1,382	517	855
Black %	2.4%	1.5%	1.5%	0.6%	1.0%

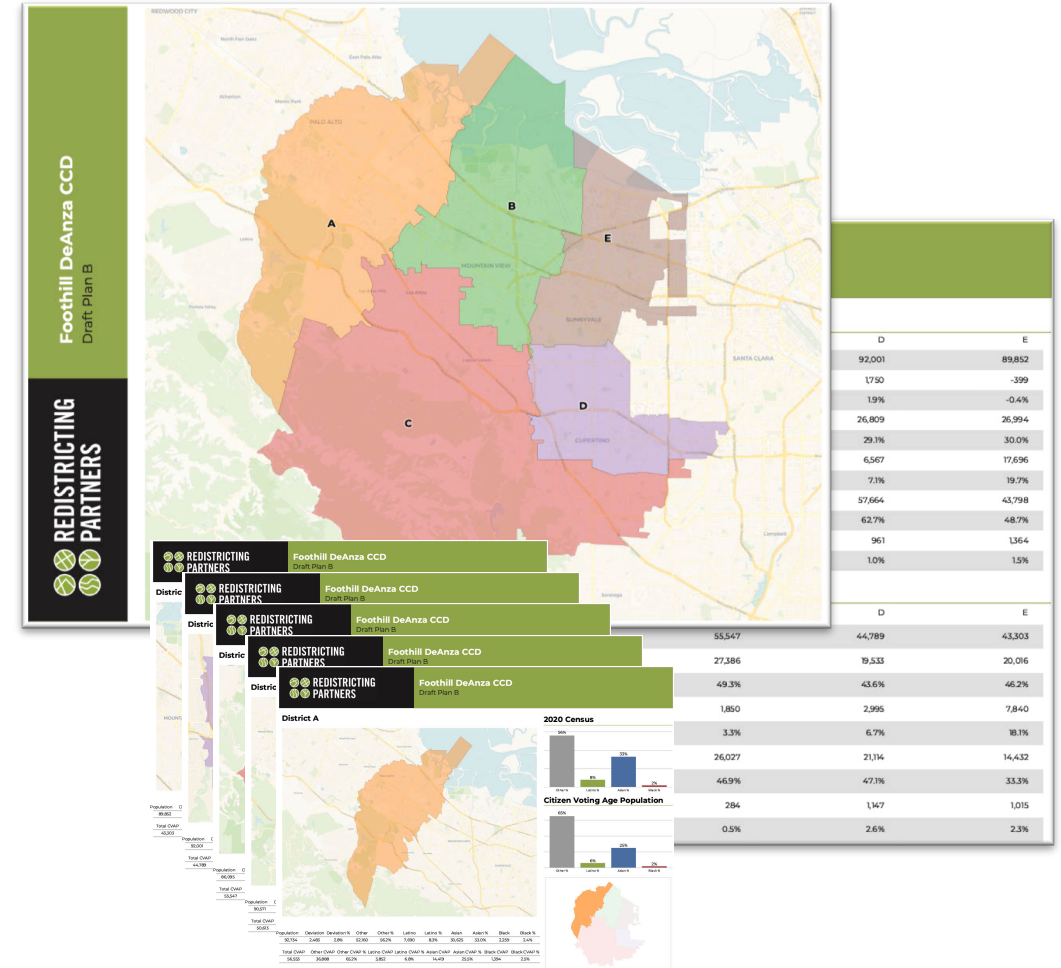
Citizen Voting Age Population (CVAP)

	A	B	C	D	E
Total CVAP	56,285	48,724	44,920	56,157	44,719
Other CVAP	36,744	29,318	21,093	29,250	18,247
Other CVAP %	65.3%	60.2%	47.0%	52.1%	40.8%
Latino CVAP	3,829	5,558	7,853	1,918	2,777
Latino CVAP %	6.8%	11.4%	17.5%	3.4%	6.1%
Asian CVAP	14,334	12,623	14,969	24,677	22,629
Asian CVAP %	25.5%	25.9%	33.3%	43.9%	50.6%
Black CVAP	1,378	1,225	1,005	312	1,126
Black CVAP %	2.4%	2.5%	2.2%	0.6%	2.5%

Sequencing of Elections

The final number of districts is at the discretion of the Board of Trustees. For the purposes of identifying a potential numbering system, the following can be used for both plans:

- A** = Seat 1, 2024 election
- B** = Seat 2, 2022 election
- C** = Seat 3, 2024 election
- D** = Seat 4, 2022 election
- E** = Seat 5, 2024 election

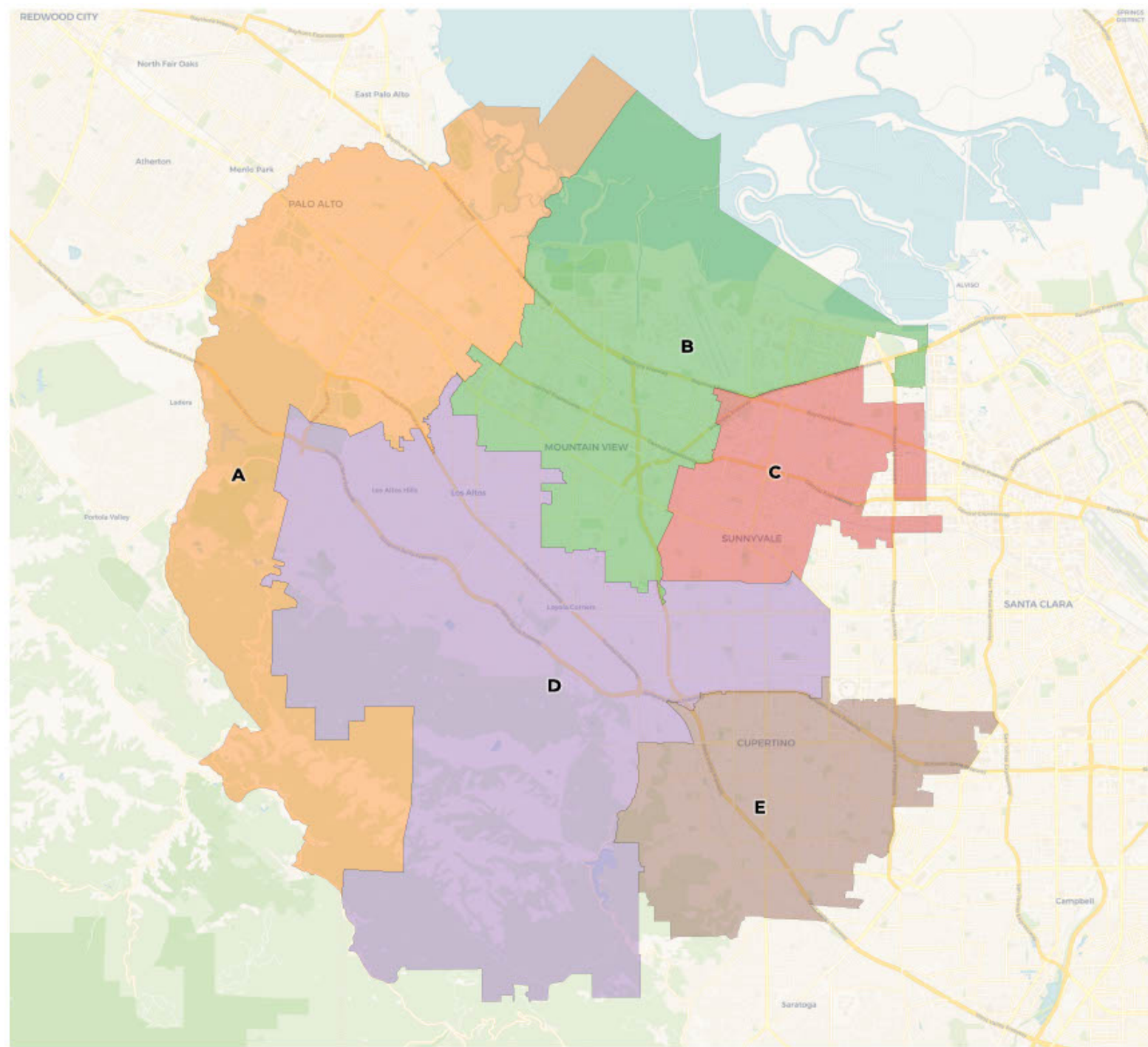




**REDISTRICTING
PARTNERS**



Foothill DeAnza CCD
Draft Plan A



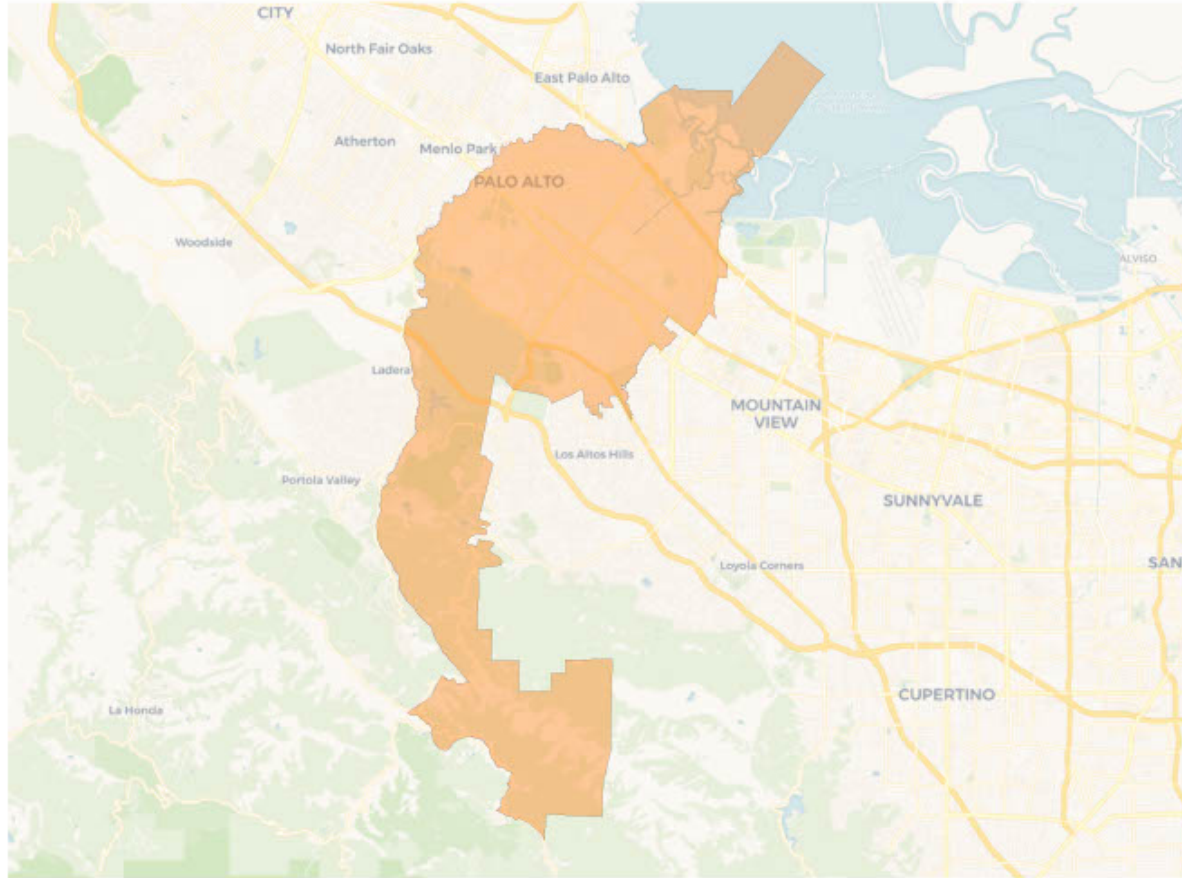
2020 Census

	A	B	C	D	E
Population	89,981	87,776	89,322	90,180	93,994
Deviation	-270	-2,475	-929	-71	3,743
Deviation %	-0.3%	-2.7%	-1.0%	-0.1%	4.1%
Other	50,668	41,122	26,876	42,881	21,702
Other %	56.3%	46.8%	30.1%	47.6%	23.1%
Latino	7,599	14,726	17,645	5,567	4,511
Latino %	8.4%	16.8%	19.8%	6.2%	4.8%
Asian	29,459	30,636	43,437	40,993	67,095
Asian %	32.7%	34.9%	48.6%	45.5%	71.4%
Black	2,255	1,292	1,364	739	686
Black %	2.5%	1.5%	1.5%	0.8%	0.7%

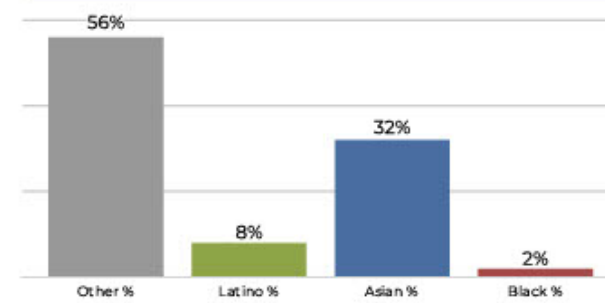
Citizen Voting Age Population (CVAP)

	A	B	C	D	E
Total CVAP	54,639	48,985	43,113	52,448	51,620
Other CVAP	35,736	29,603	19,894	31,284	18,135
Other CVAP %	65.4%	60.4%	46.1%	59.6%	35.1%
Latino CVAP	3,835	5,319	7,820	2,581	2,320
Latino CVAP %	7.0%	10.9%	18.1%	4.9%	4.5%
Asian CVAP	13,686	12,867	14,384	18,001	30,294
Asian CVAP %	25.0%	26.3%	33.4%	34.3%	58.7%
Black CVAP	1,382	1,196	1,015	582	871
Black CVAP %	2.5%	2.4%	2.4%	1.1%	1.7%

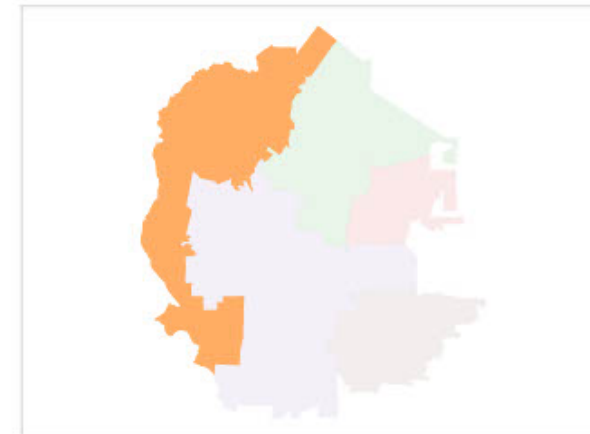
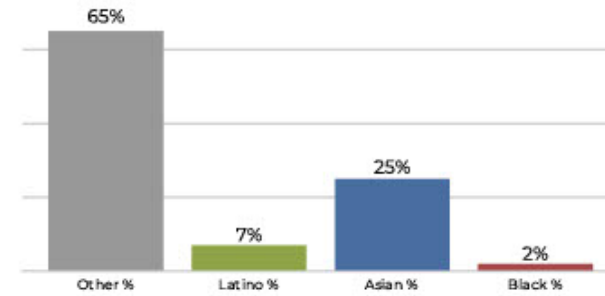
District A



2020 Census

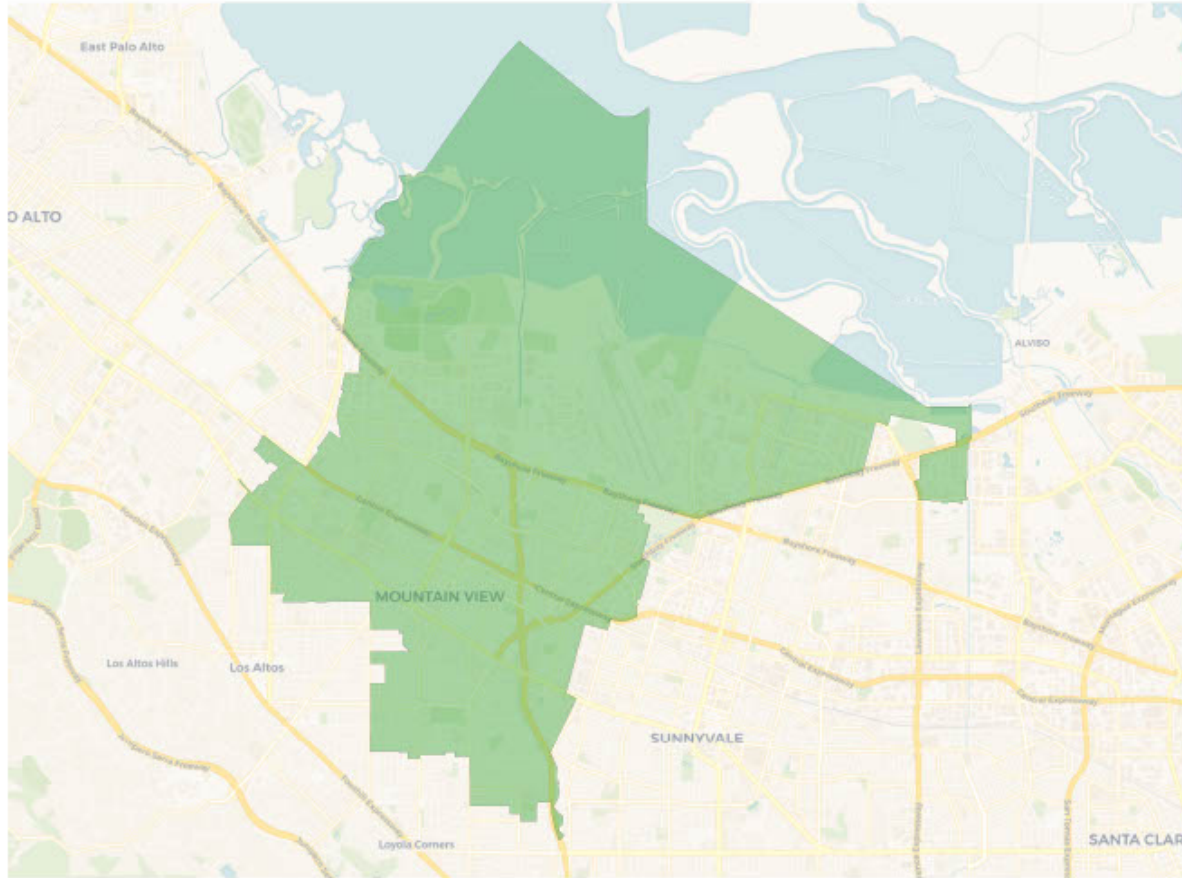


Citizen Voting Age Population

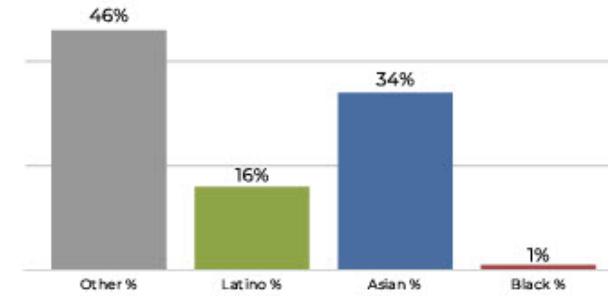


Population	Deviation	Deviation %	Other	Other %	Latino	Latino %	Asian	Asian %	Black	Black %
89,981	-270	-0.3%	50,668	56.3%	7,599	8.4%	29,459	32.7%	2,255	2.5%
Total CVAP	Other CVAP	Other CVAP %	Latino CVAP	Latino CVAP %	Asian CVAP	Asian CVAP %	Black CVAP	Black CVAP %		
54,639	35,736	65.4%	3,835	7.0%	13,686	25.0%	1,382	2.5%		

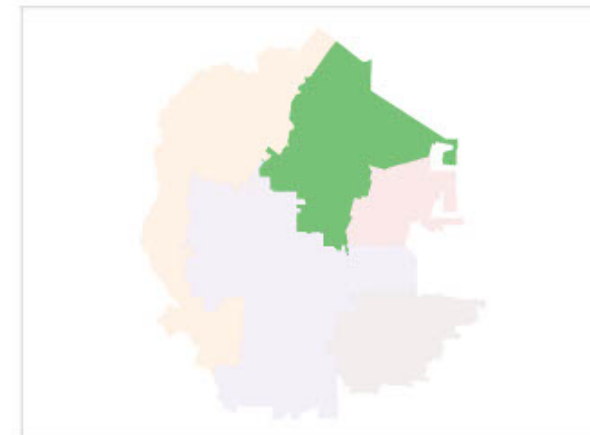
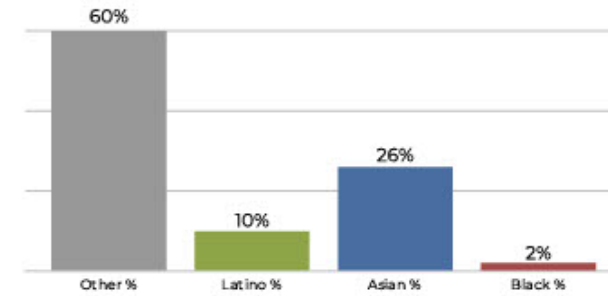
District B



2020 Census

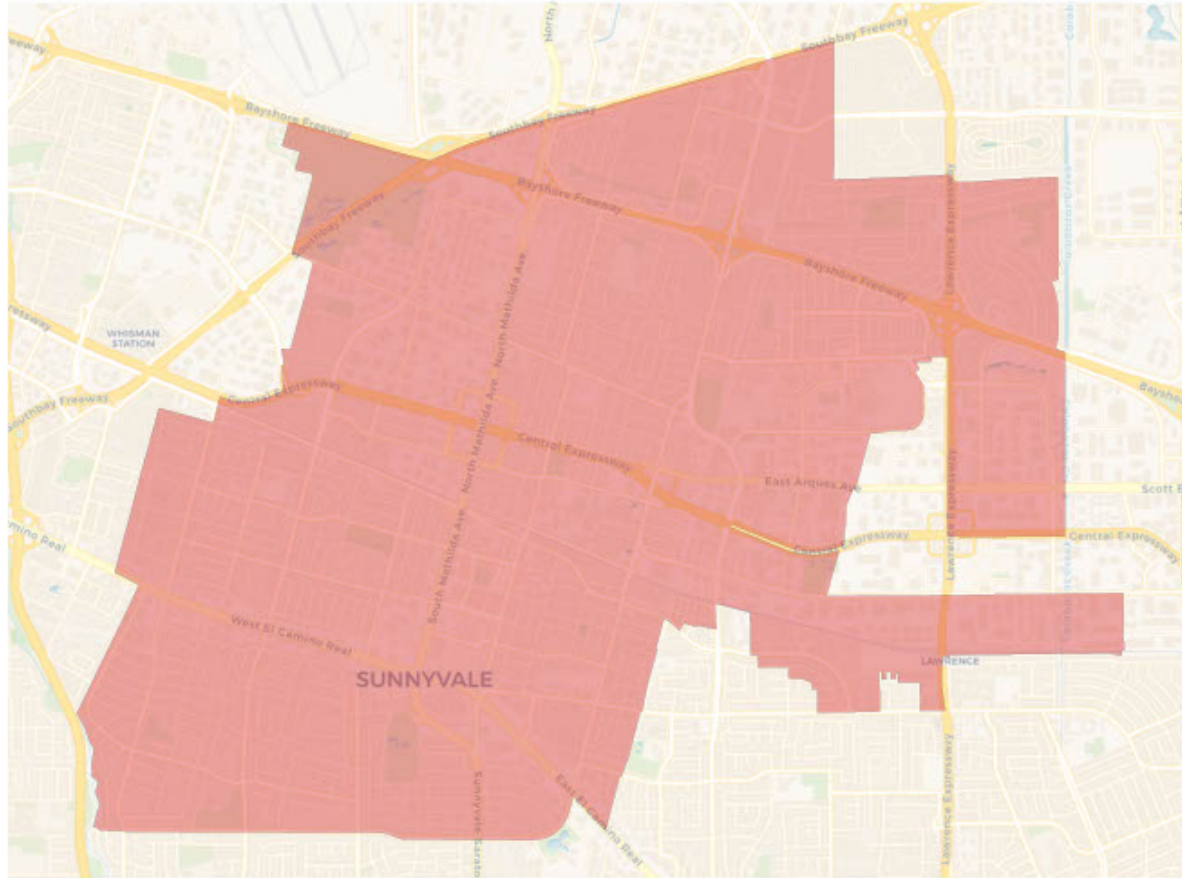


Citizen Voting Age Population

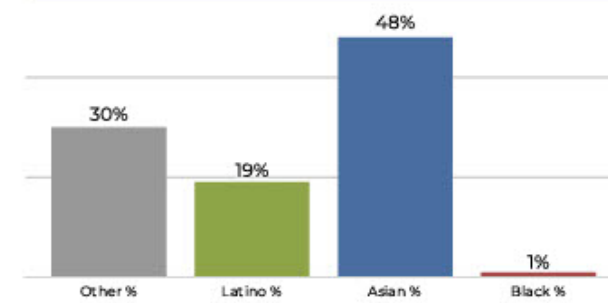


Population	Deviation	Deviation %	Other	Other %	Latino	Latino %	Asian	Asian %	Black	Black %
87,776	-2,475	-2.7%	41,122	46.8%	14,726	16.8%	30,636	34.9%	1,292	1.5%
Total CVAP	Other CVAP	Other CVAP %	Latino CVAP	Latino CVAP %	Asian CVAP	Asian CVAP %	Black CVAP	Black CVAP %		
48,985	29,603	60.4%	5,319	10.9%	12,867	26.3%	1,196	2.4%		

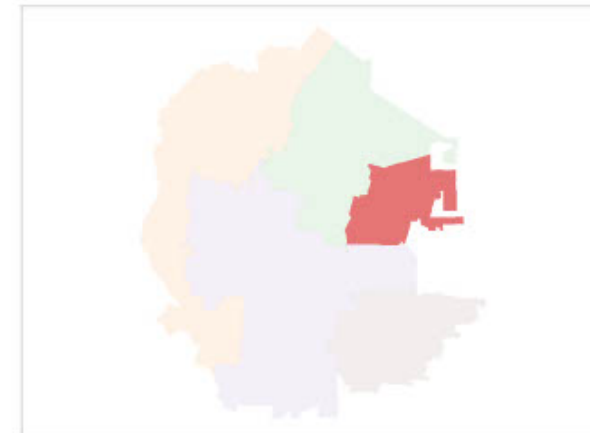
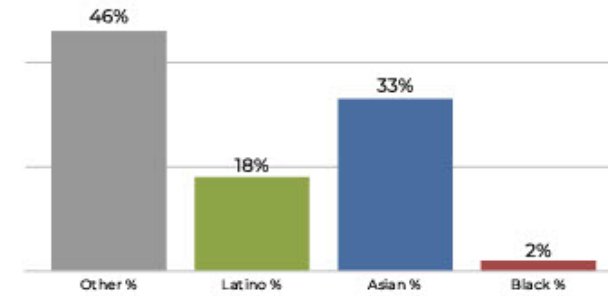
District C



2020 Census

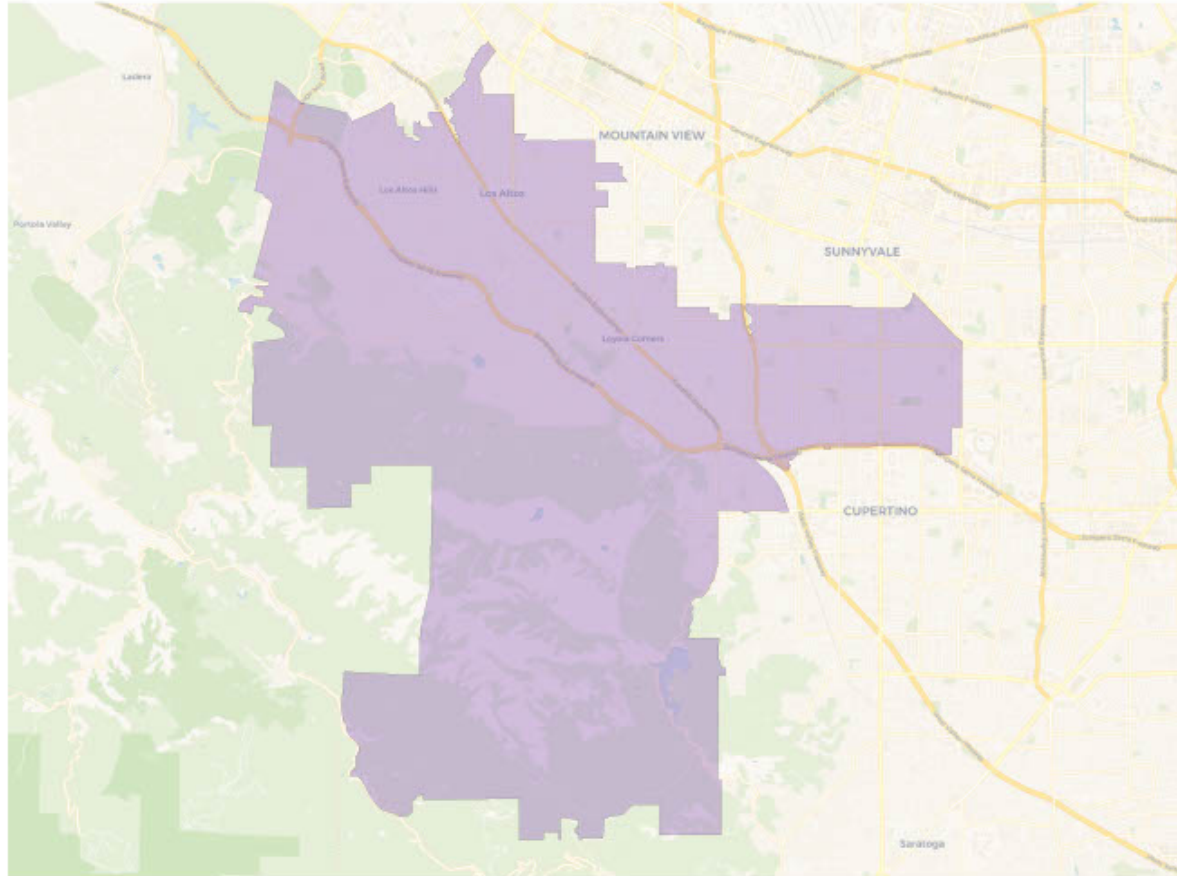


Citizen Voting Age Population

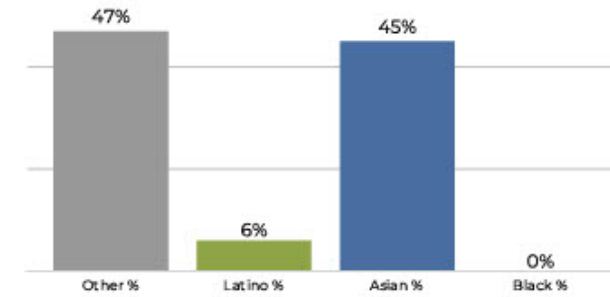


Population	Deviation	Deviation %	Other	Other %	Latino	Latino %	Asian	Asian %	Black	Black %
89,322	-929	-1.0%	26,876	30.1%	17,645	19.8%	43,437	48.6%	1,364	1.5%
Total CVAP	Other CVAP	Other CVAP %	Latino CVAP	Latino CVAP %	Asian CVAP	Asian CVAP %	Black CVAP	Black CVAP %		
43,113	19,894	46.1%	7,820	18.1%	14,384	33.4%	1,015	2.4%		

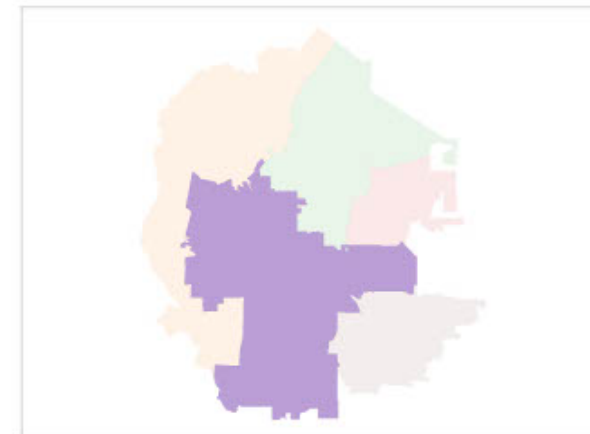
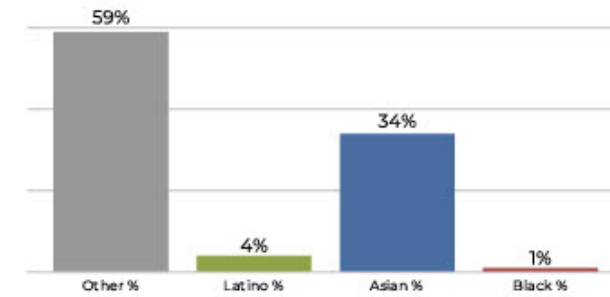
District D



2020 Census

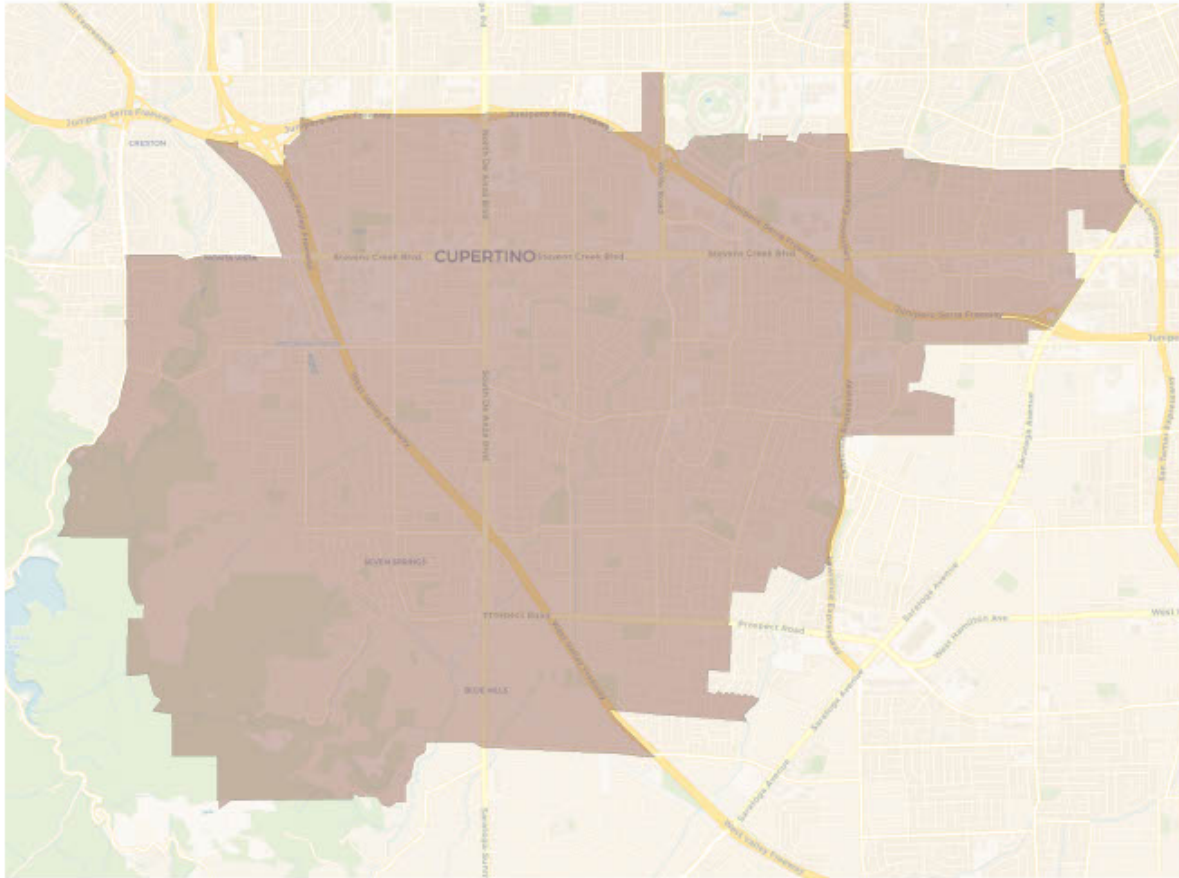


Citizen Voting Age Population

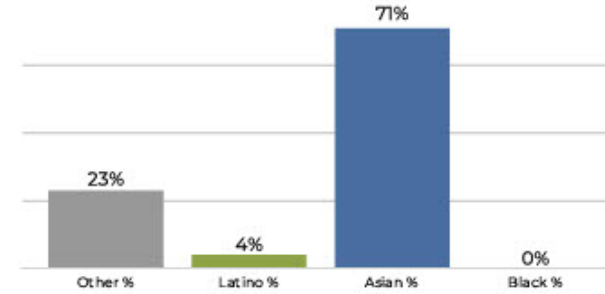


Population	Deviation	Deviation %	Other	Other %	Latino	Latino %	Asian	Asian %	Black	Black %
90,180	-71	-0.1%	42,881	47.6%	5,567	6.2%	40,993	45.5%	739	0.8%
Total CVAP	Other CVAP	Other CVAP %	Latino CVAP	Latino CVAP %	Asian CVAP	Asian CVAP %	Black CVAP	Black CVAP %		
52,448	31,284	59.6%	2,581	4.9%	18,001	34.3%	582	1.1%		

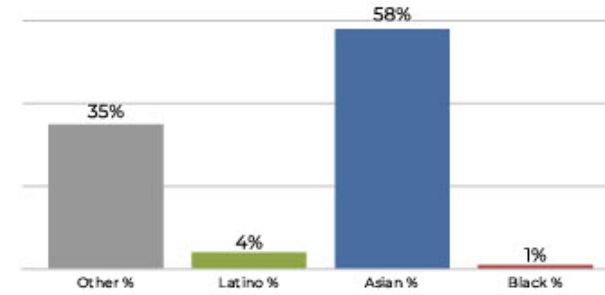
District E



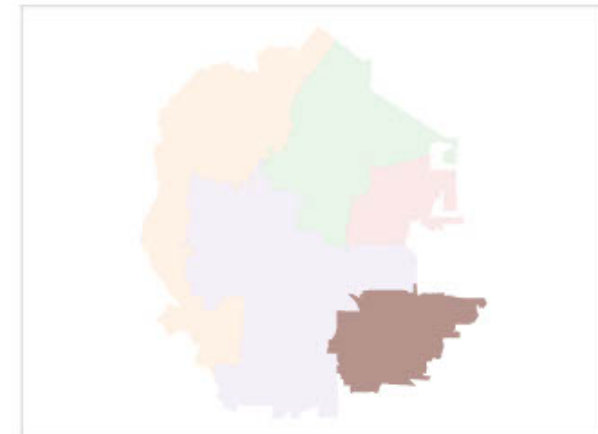
2020 Census



Citizen Voting Age Population

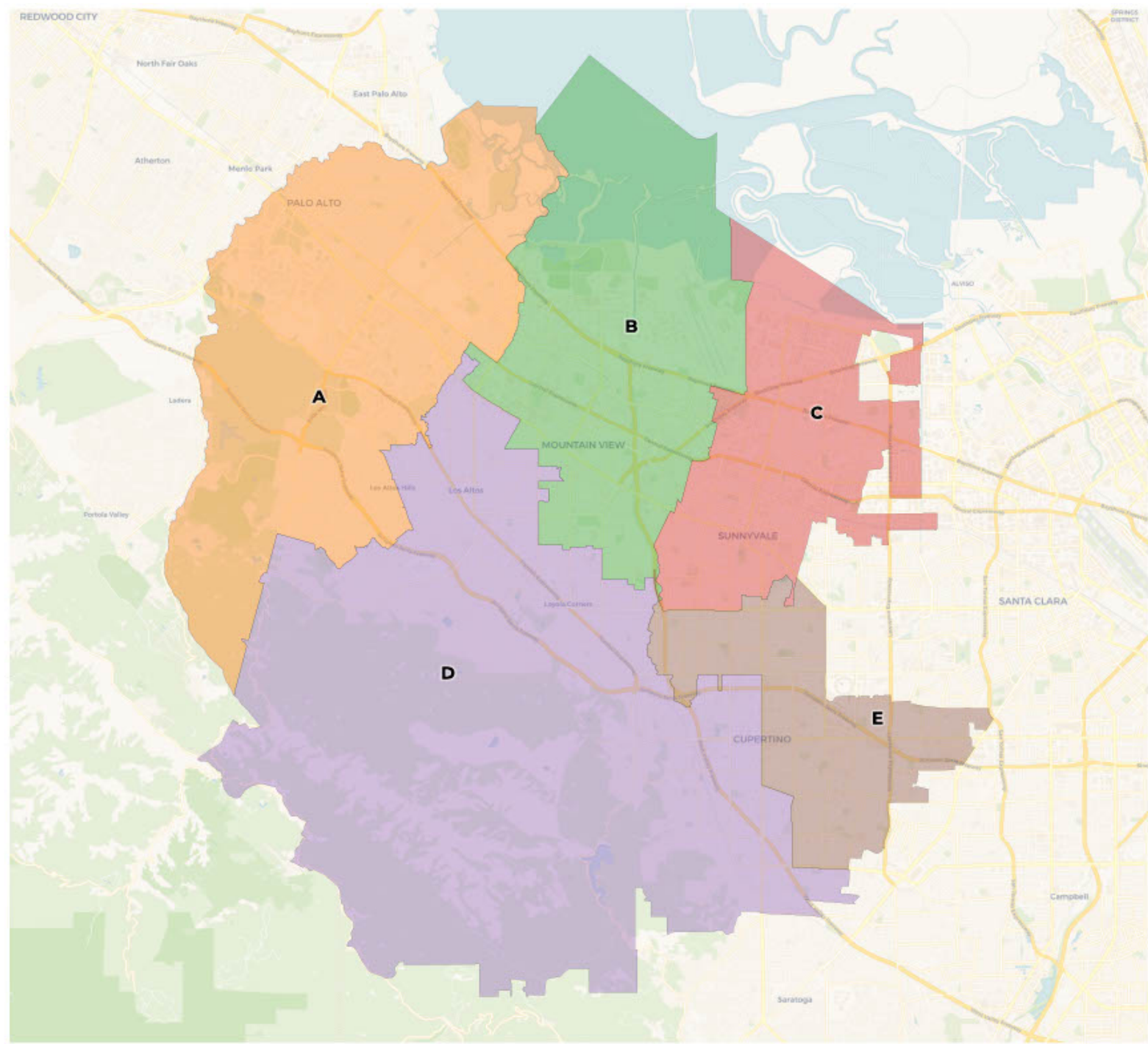


Population	Deviation	Deviation %	Other	Other %	Latino	Latino %	Asian	Asian %	Black	Black %
93,994	3,743	4.1%	21,702	23.1%	4,511	4.8%	67,095	71.4%	686	0.7%
Total CVAP	Other CVAP	Other CVAP %	Latino CVAP	Latino CVAP %	Asian CVAP	Asian CVAP %	Black CVAP	Black CVAP %		
51,620	18,135	35.1%	2,320	4.5%	30,294	58.7%	871	1.7%		





Foothill DeAnza CCD
Draft Plan C



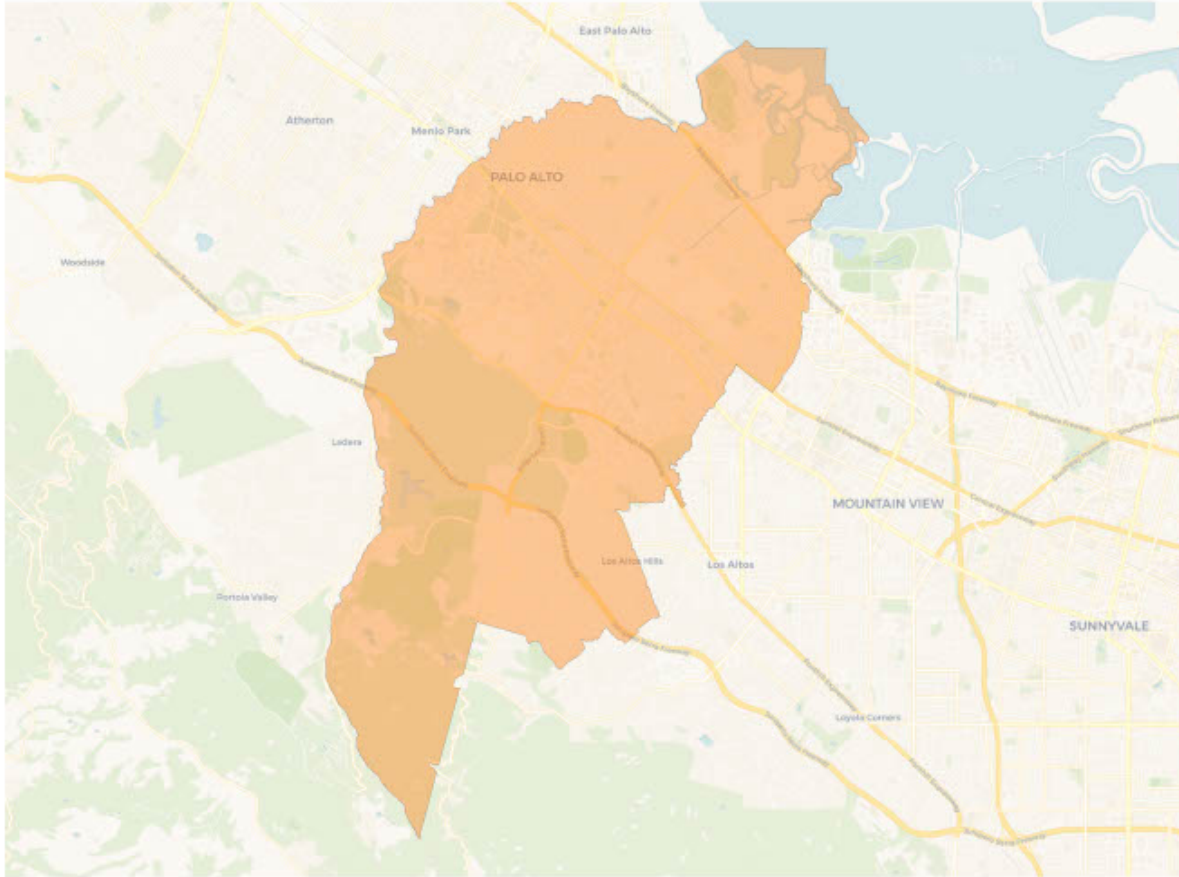
2020 Census

	A	B	C	D	E
Population	92,289	88,737	91,624	91,113	87,490
Deviation	2,038	-1,514	1,373	862	-2,761
Deviation %	2.3%	-1.7%	1.5%	1.0%	-3.1%
Other	52,007	40,152	28,637	37,856	24,597
Other %	56.4%	45.2%	31.3%	41.5%	28.1%
Latino	7,617	15,900	16,971	3,729	5,831
Latino %	8.3%	17.9%	18.5%	4.1%	6.7%
Asian	30,437	31,331	44,634	49,011	56,207
Asian %	33.0%	35.3%	48.7%	53.8%	64.2%
Black	2,228	1,354	1,382	517	855
Black %	2.4%	1.5%	1.5%	0.6%	1.0%

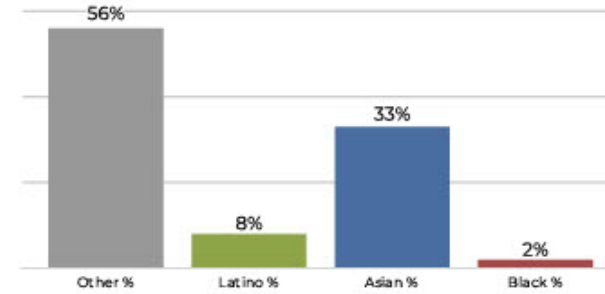
Citizen Voting Age Population (CVAP)

	A	B	C	D	E
Total CVAP	56,285	48,724	44,920	56,157	44,719
Other CVAP	36,744	29,318	21,093	29,250	18,247
Other CVAP %	65.3%	60.2%	47.0%	52.1%	40.8%
Latino CVAP	3,829	5,558	7,853	1,918	2,777
Latino CVAP %	6.8%	11.4%	17.5%	3.4%	6.1%
Asian CVAP	14,334	12,623	14,969	24,677	22,629
Asian CVAP %	25.5%	25.9%	33.3%	43.9%	50.6%
Black CVAP	1,378	1,225	1,005	312	1,126
Black CVAP %	2.4%	2.5%	2.2%	0.6%	2.5%

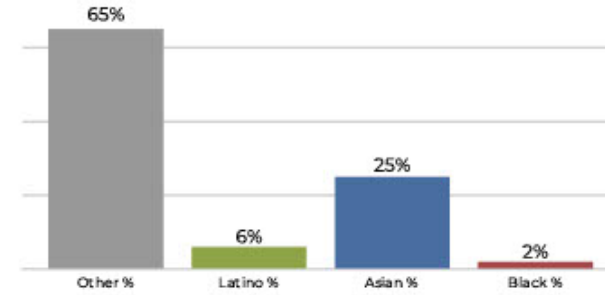
District A



2020 Census

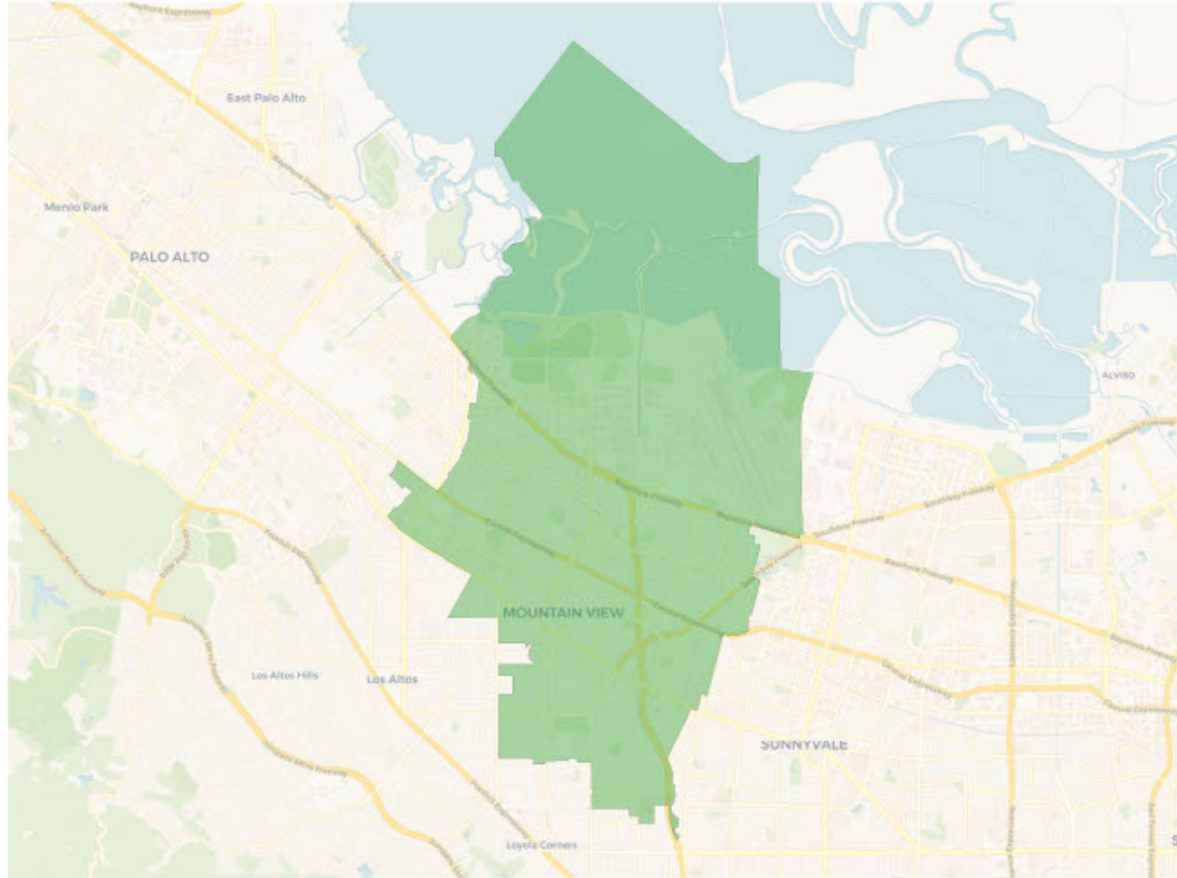


Citizen Voting Age Population

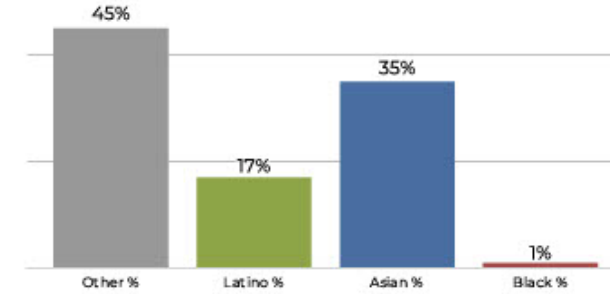


Population	Deviation	Deviation %	Other	Other %	Latino	Latino %	Asian	Asian %	Black	Black %
92,289	2,038	2.3%	52,007	56.4%	7,617	8.3%	30,437	33.0%	2,228	2.4%
Total CVAP	Other CVAP	Other CVAP %	Latino CVAP	Latino CVAP %	Asian CVAP	Asian CVAP %	Black CVAP	Black CVAP %		
56,285	36,744	65.3%	3,829	6.8%	14,334	25.5%	1,378	2.4%		

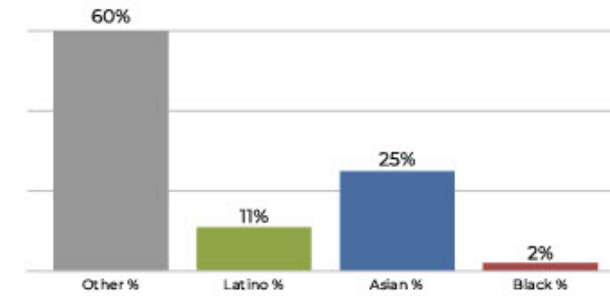
District B



2020 Census

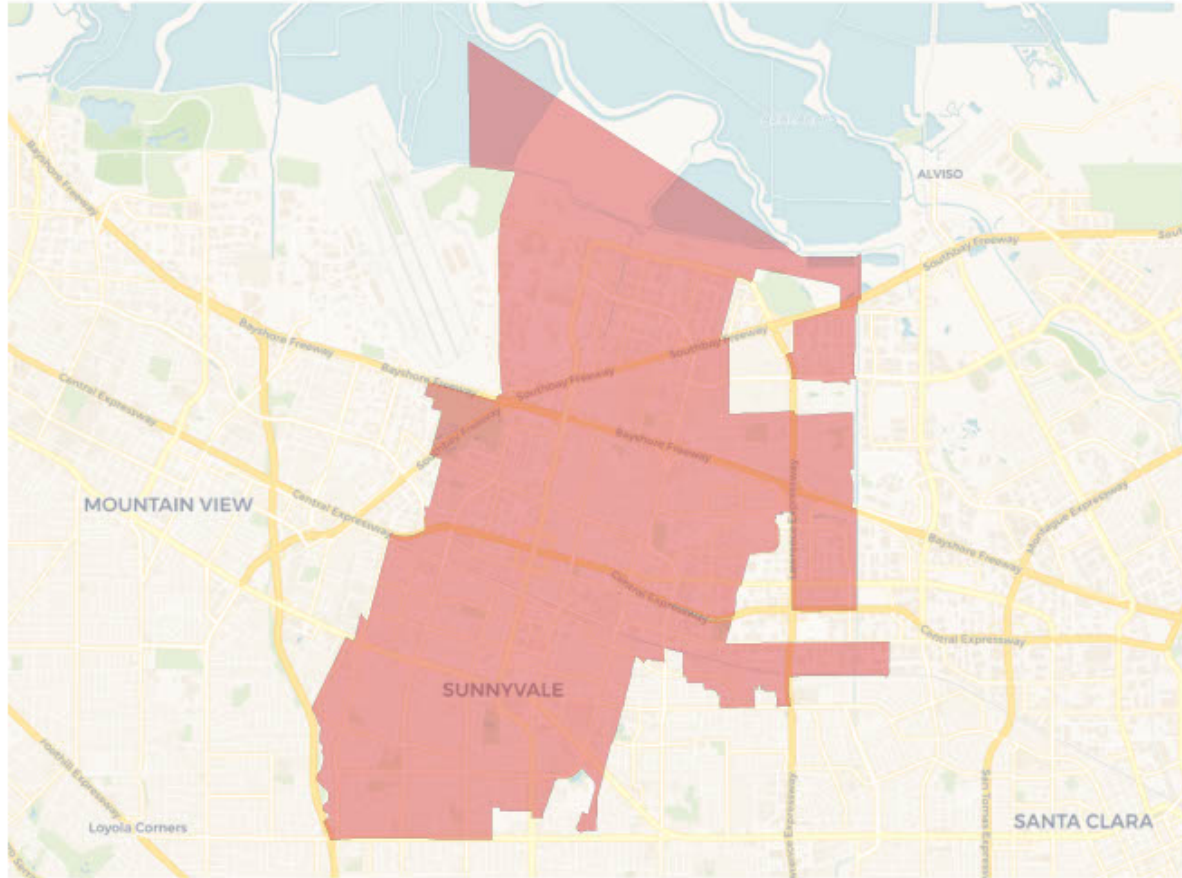


Citizen Voting Age Population

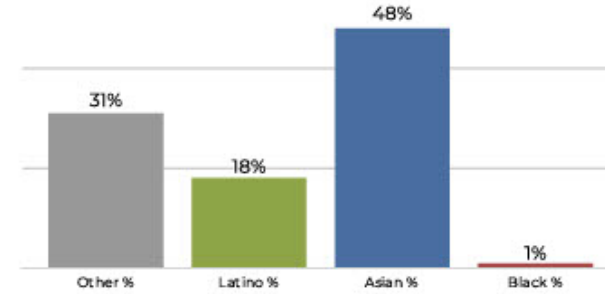


Population	Deviation	Deviation %	Other	Other %	Latino	Latino %	Asian	Asian %	Black	Black %
88,737	-1,514	-1.7%	40,152	45.2%	15,900	17.9%	31,331	35.3%	1,354	1.5%
Total CVAP	Other CVAP	Other CVAP %	Latino CVAP	Latino CVAP %	Asian CVAP	Asian CVAP %	Black CVAP	Black CVAP %		
48,724	29,318	60.2%	5,558	11.4%	12,623	25.9%	1,225	2.5%		

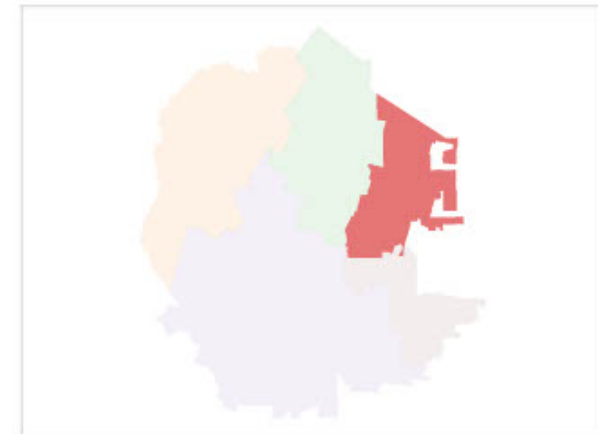
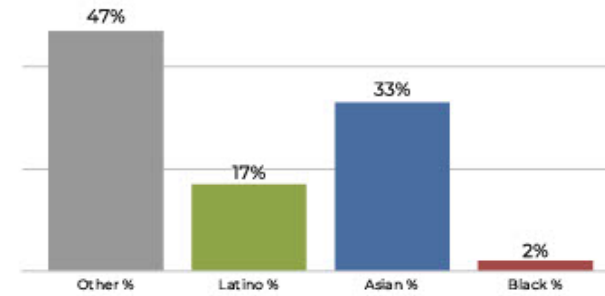
District C



2020 Census

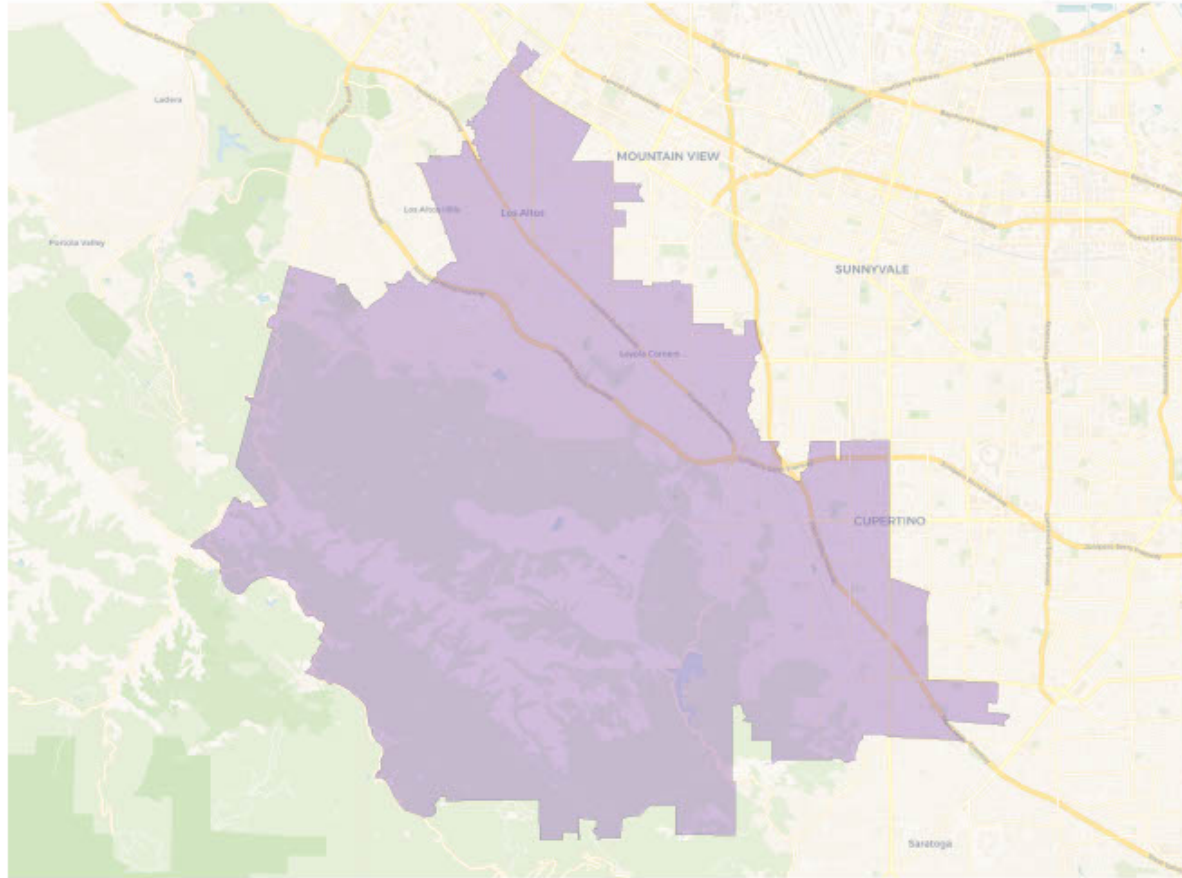


Citizen Voting Age Population

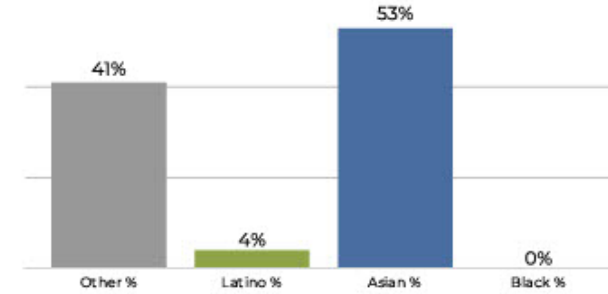


Population	Deviation	Deviation %	Other	Other %	Latino	Latino %	Asian	Asian %	Black	Black %
91,624	1,373	1.5%	28,637	31.3%	16,971	18.5%	44,634	48.7%	1,382	1.5%
Total CVAP	Other CVAP	Other CVAP %	Latino CVAP	Latino CVAP %	Asian CVAP	Asian CVAP %	Black CVAP	Black CVAP %		
44,920	21,093	47.0%	7,853	17.5%	14,969	33.3%	1,005	2.2%		

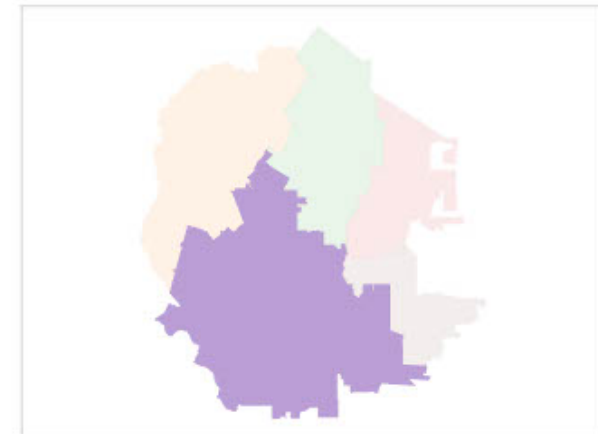
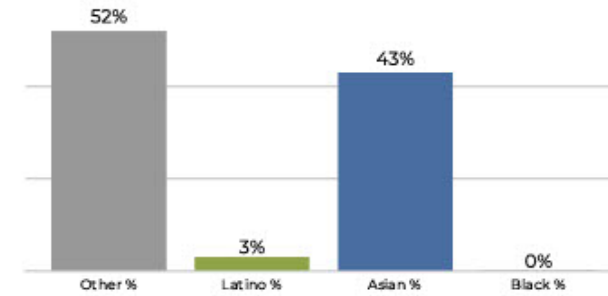
District D



2020 Census

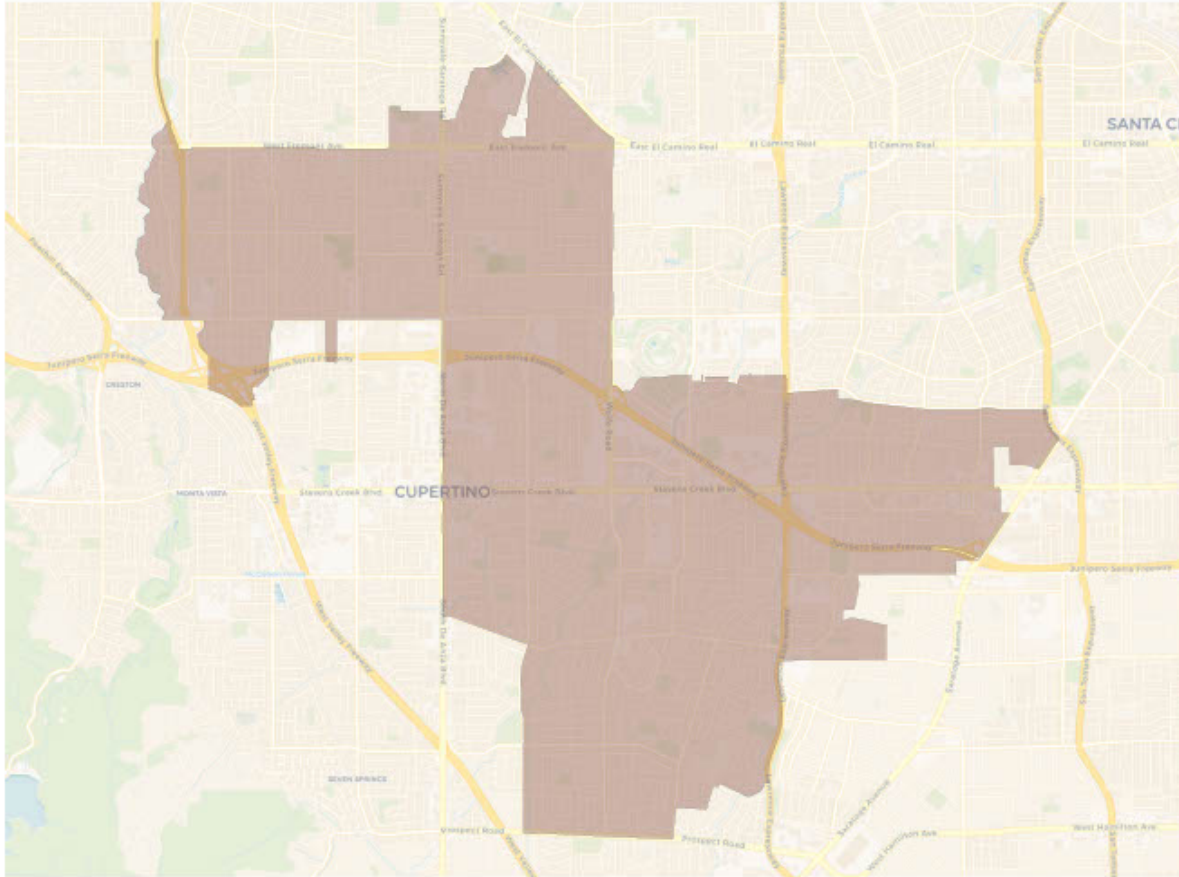


Citizen Voting Age Population

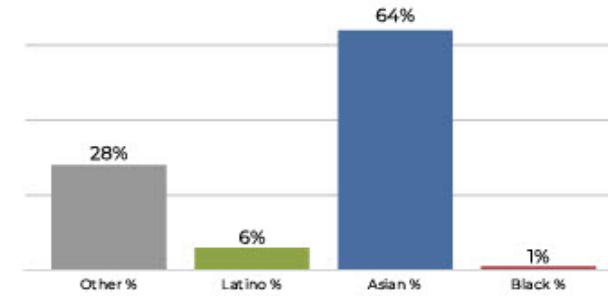


Population	Deviation	Deviation %	Other	Other %	Latino	Latino %	Asian	Asian %	Black	Black %
91,113	862	1.0%	37,856	41.5%	3,729	4.1%	49,011	53.8%	517	0.6%
Total CVAP	Other CVAP	Other CVAP %	Latino CVAP	Latino CVAP %	Asian CVAP	Asian CVAP %	Black CVAP	Black CVAP %		
56,157	29,250	52.1%	1,918	3.4%	24,677	43.9%	312	0.6%		

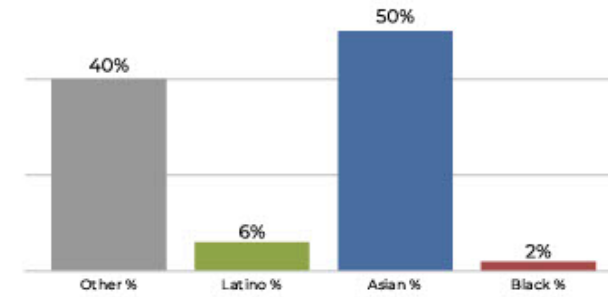
District E



2020 Census



Citizen Voting Age Population



Population	Deviation	Deviation %	Other	Other %	Latino	Latino %	Asian	Asian %	Black	Black %
87,490	-2,761	-3.1%	24,597	28.1%	5,831	6.7%	56,207	64.2%	855	1.0%
Total CVAP	Other CVAP	Other CVAP %	Latino CVAP	Latino CVAP %	Asian CVAP	Asian CVAP %	Black CVAP	Black CVAP %		
44,719	18,247	40.8%	2,717	6.1%	22,629	50.6%	1,126	2.5%		

