



Foothill-De Anza
Community College
2021 Districting

FOOTHILL+DE ANZA

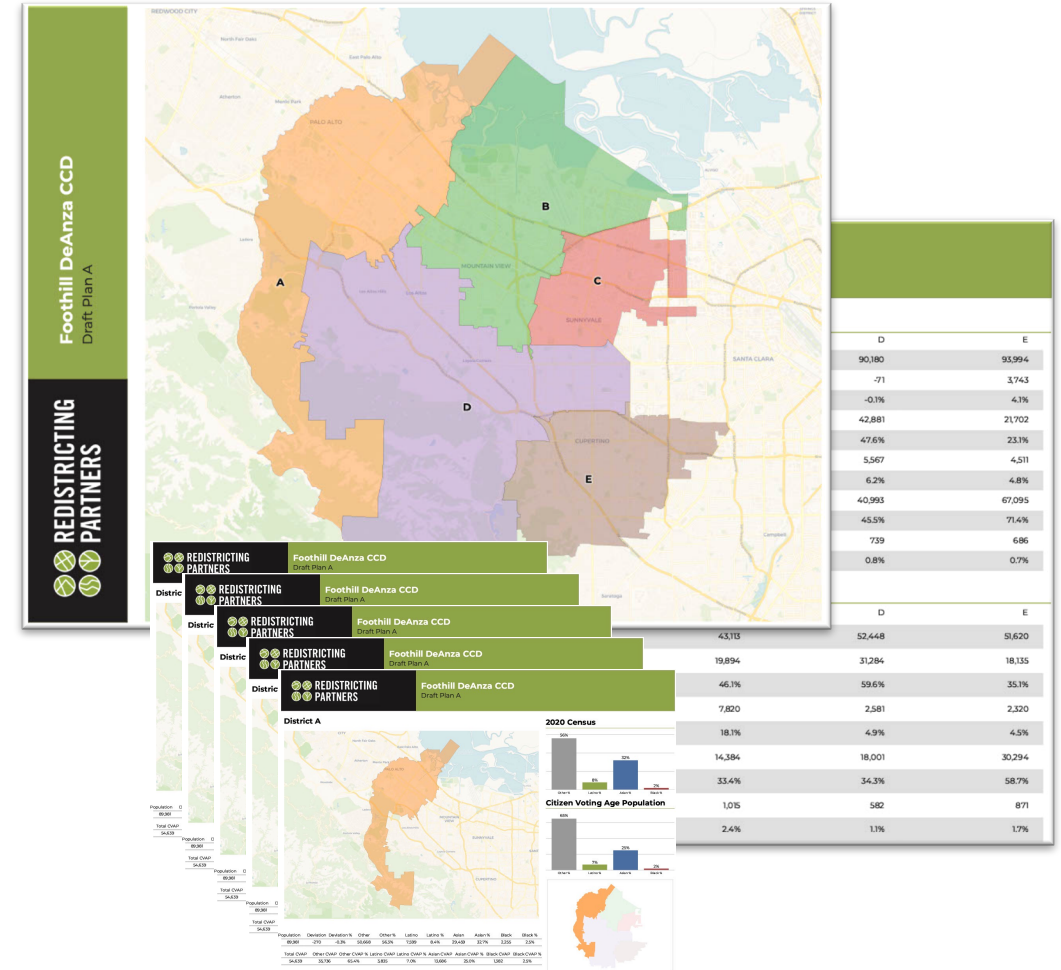
Your Colleges, Your Voice

Moving to Area Elections

Draft Map Plan A

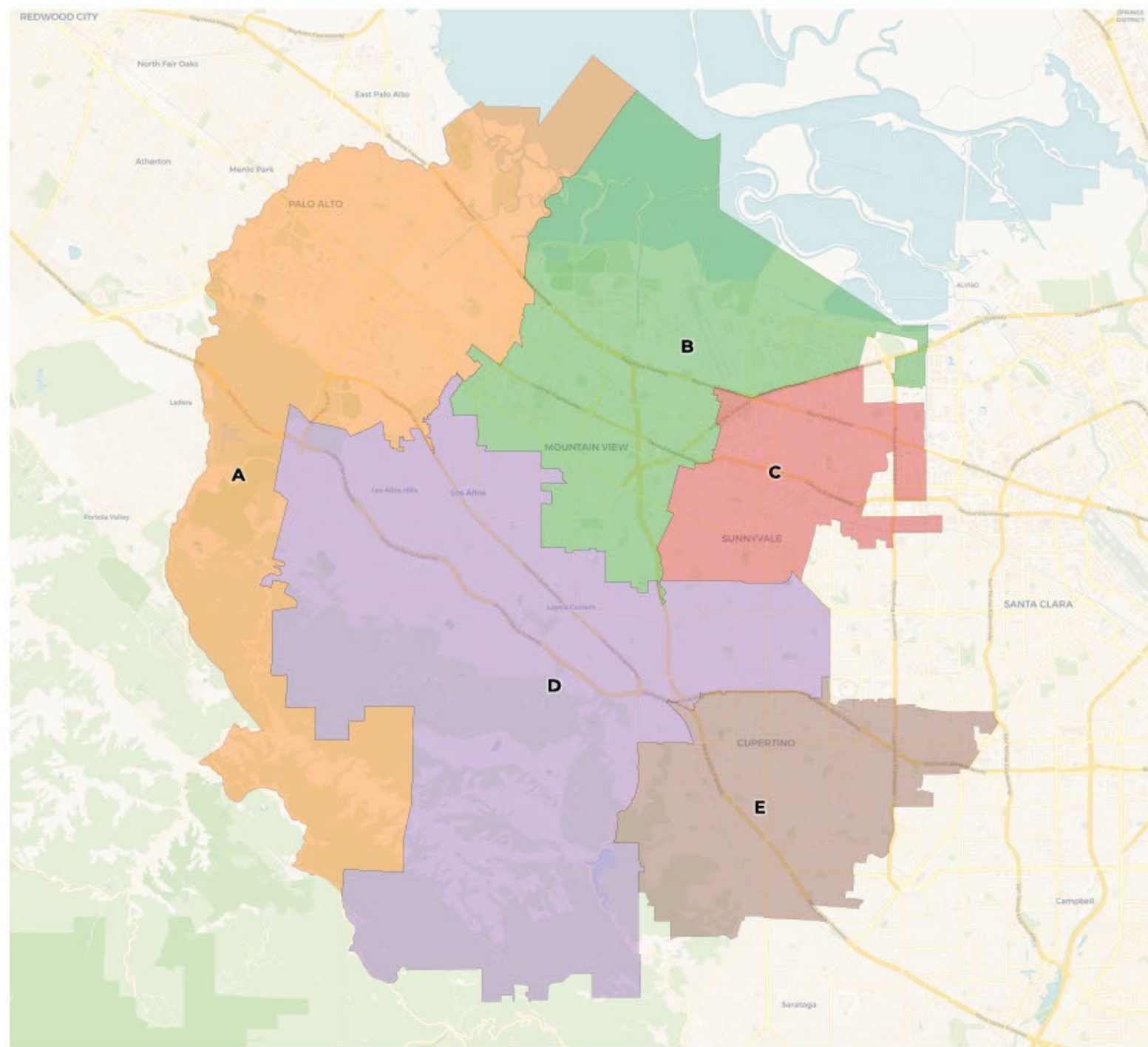
The draft plan is provided with both a PDF and Online Web-based format

- **Draft Map A** – Based on Cities – keeping cities whole and balancing for population, compactness, other factors.





Foothill DeAnza CCD
Draft Plan A

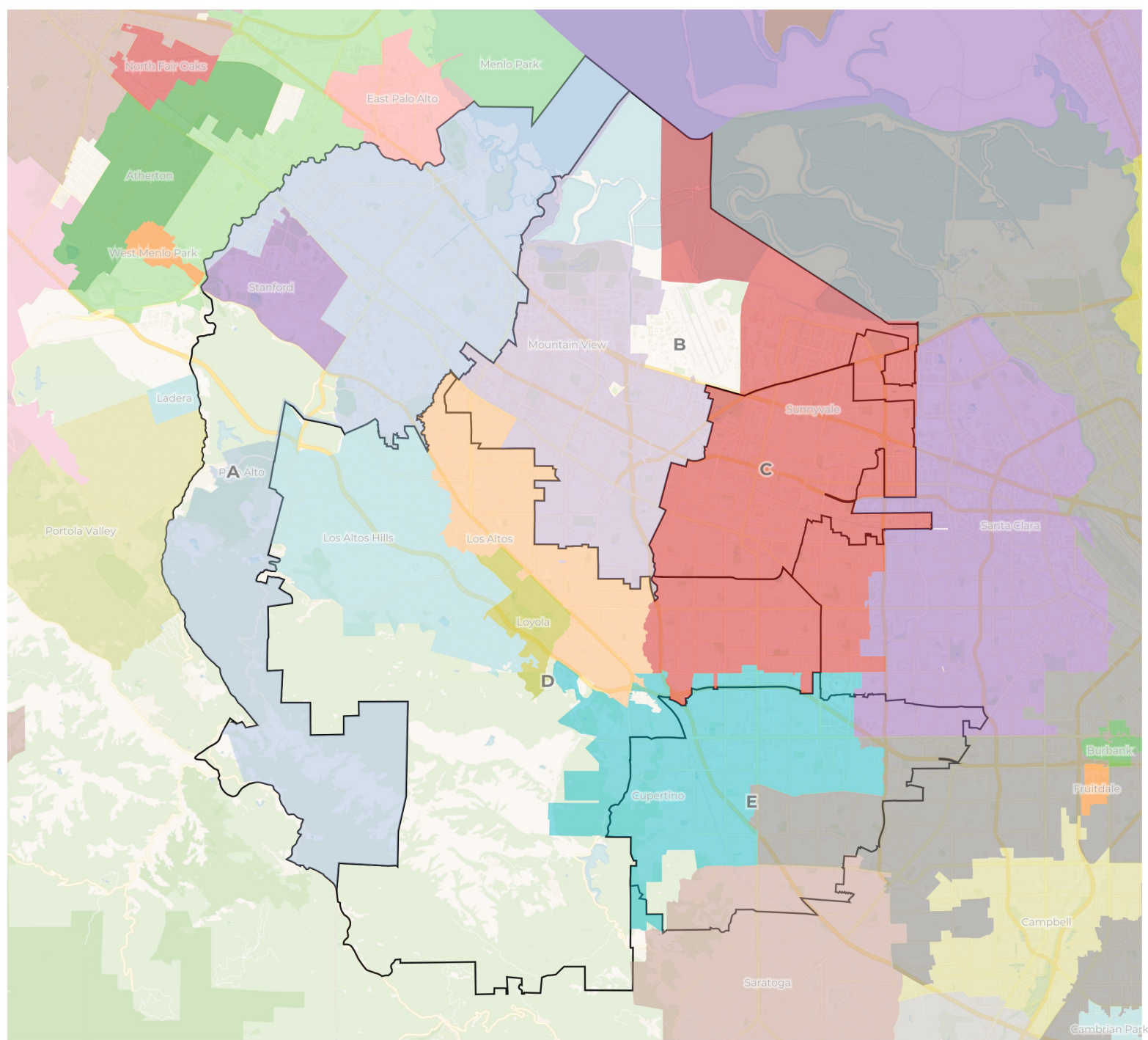




**REDISTRICTING
PARTNERS**

Foothill DeAnza CCD

Plan A - Cities Overlay



2020 Census

	A	B	C	D	E
Population	89,981	87,776	89,322	90,180	93,994
Deviation	-270	-2,475	-929	-71	3,743
Deviation %	-0.3%	-2.7%	-1.0%	-0.1%	4.1%
Other	50,668	41,122	26,876	42,881	21,702
Other %	56.3%	46.8%	30.1%	47.6%	23.1%
Latino	7,599	14,726	17,645	5,567	4,511
Latino %	8.4%	16.8%	19.8%	6.2%	4.8%
Asian	29,459	30,636	43,437	40,993	67,095
Asian %	32.7%	34.9%	48.6%	45.5%	71.4%
Black	2,255	1,292	1,364	739	686
Black %	2.5%	1.5%	1.5%	0.8%	0.7%

Citizen Voting Age Population (CVAP)

	A	B	C	D	E
Total CVAP	54,639	48,985	43,113	52,448	51,620
Other CVAP	35,736	29,603	19,894	31,284	18,135
Other CVAP %	65.4%	60.4%	46.1%	59.6%	35.1%
Latino CVAP	3,835	5,319	7,820	2,581	2,320
Latino CVAP %	7.0%	10.9%	18.1%	4.9%	4.5%
Asian CVAP	13,686	12,867	14,384	18,001	30,294
Asian CVAP %	25.0%	26.3%	33.4%	34.3%	58.7%
Black CVAP	1,382	1,196	1,015	582	871
Black CVAP %	2.5%	2.4%	2.4%	1.1%	1.7%

2020 Census

	A	B	C	D	E
Population	89,981	87,776	89,322	90,180	93,994
Deviation	-270	-2,475	-929	-71	3,743
Deviation %	-0.3%	-2.7%	-1.0%	-0.1%	4.1%
Other	50,668	41,122	26,876	42,881	21,702
Other %	56.3%	46.8%	30.1%	47.6%	23.1%
Latino	7,599	14,726	17,645	5,567	4,511
Latino %	Total Deviation of 6.8%				4.8%
Asian					67,095
Asian %	32.7%	34.9%	48.6%	45.5%	71.4%
Black	2,255	1,292	1,364	739	686
Black %	2.5%	1.5%	1.5%	0.8%	0.7%

Citizen Voting Age Population (CVAP)

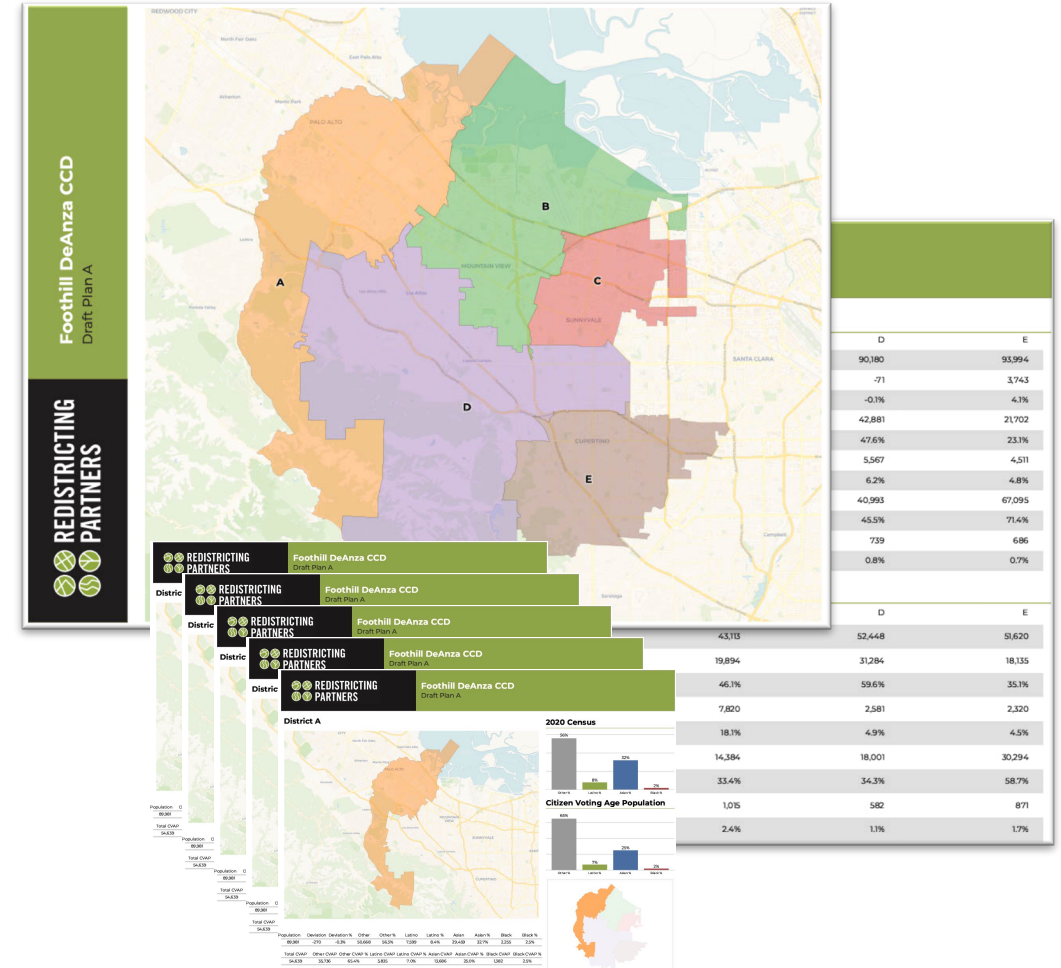
	A	B	C	D	E
Total CVAP	54,639	48,985	43,113	52,448	51,620
Other CVAP	35,736	29,603	19,894	31,284	18,135
Other CVAP %	65.4%	60.4%	46.1%	59.6%	35.1%
Latino CVAP	3,835	5,319	7,820	2,581	2,320
Latino CVAP %	7.0%	10.9%	18.1%	4.9%	4.5%
Asian CVAP	13,686	12,867	14,384	18,001	30,294
Asian CVAP %	25.0%	26.3%	33.4%	34.3%	58.7%
Black CVAP	1,382	1,196	1,015	582	871
Black CVAP %	2.5%	2.4%	2.4%	1.1%	1.7%

Sequencing of Elections

It is at the discretion of the Board of Trustees to assign the election order of each new seat. The Board shall:

- Give special consideration to the purposes of the CVRA
- Take into account the preferences expressed by members of the districts

See Election Code Section 10010

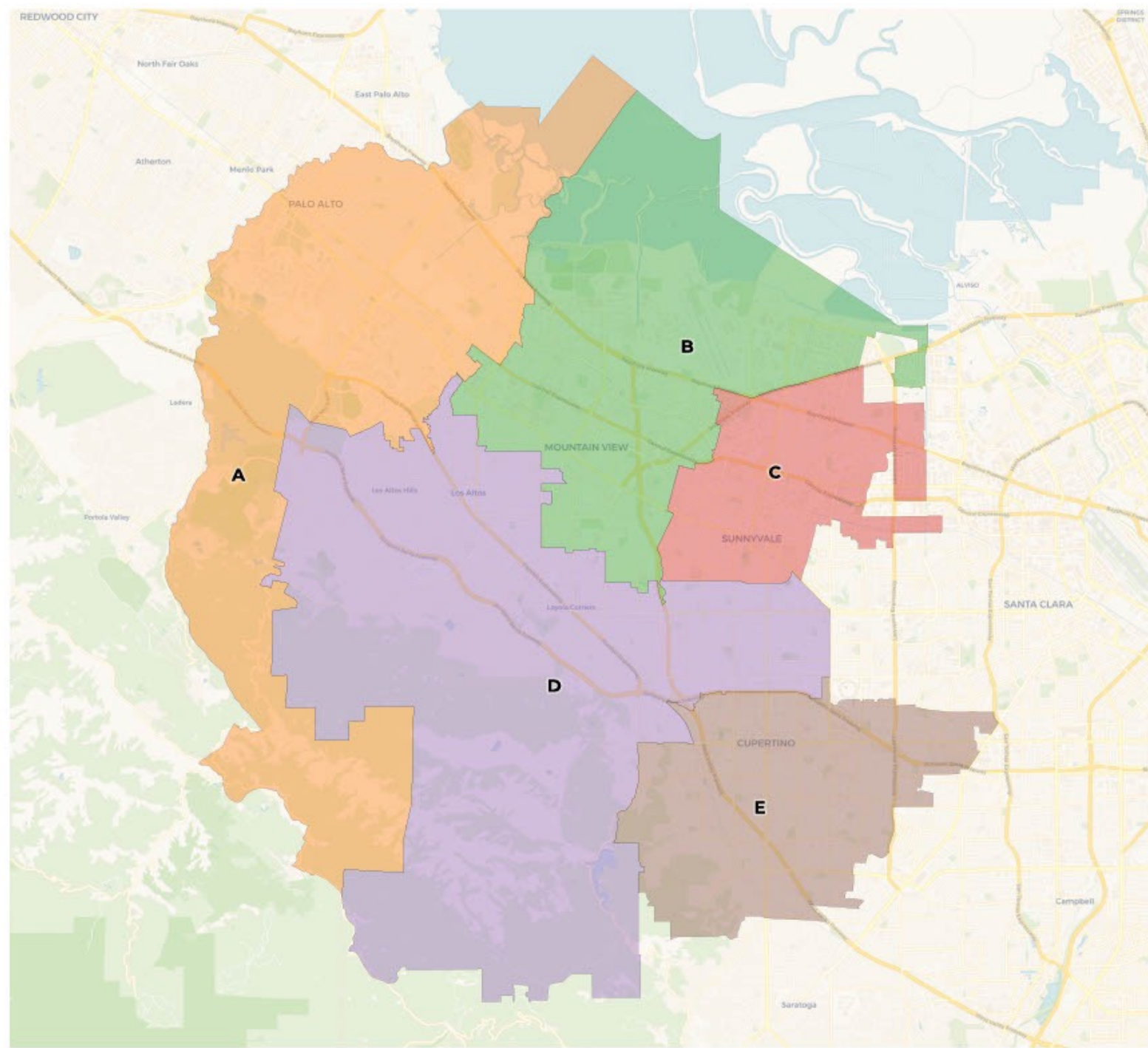




REDISTRICTING PARTNERS



Foothill DeAnza CCD
Draft Plan A

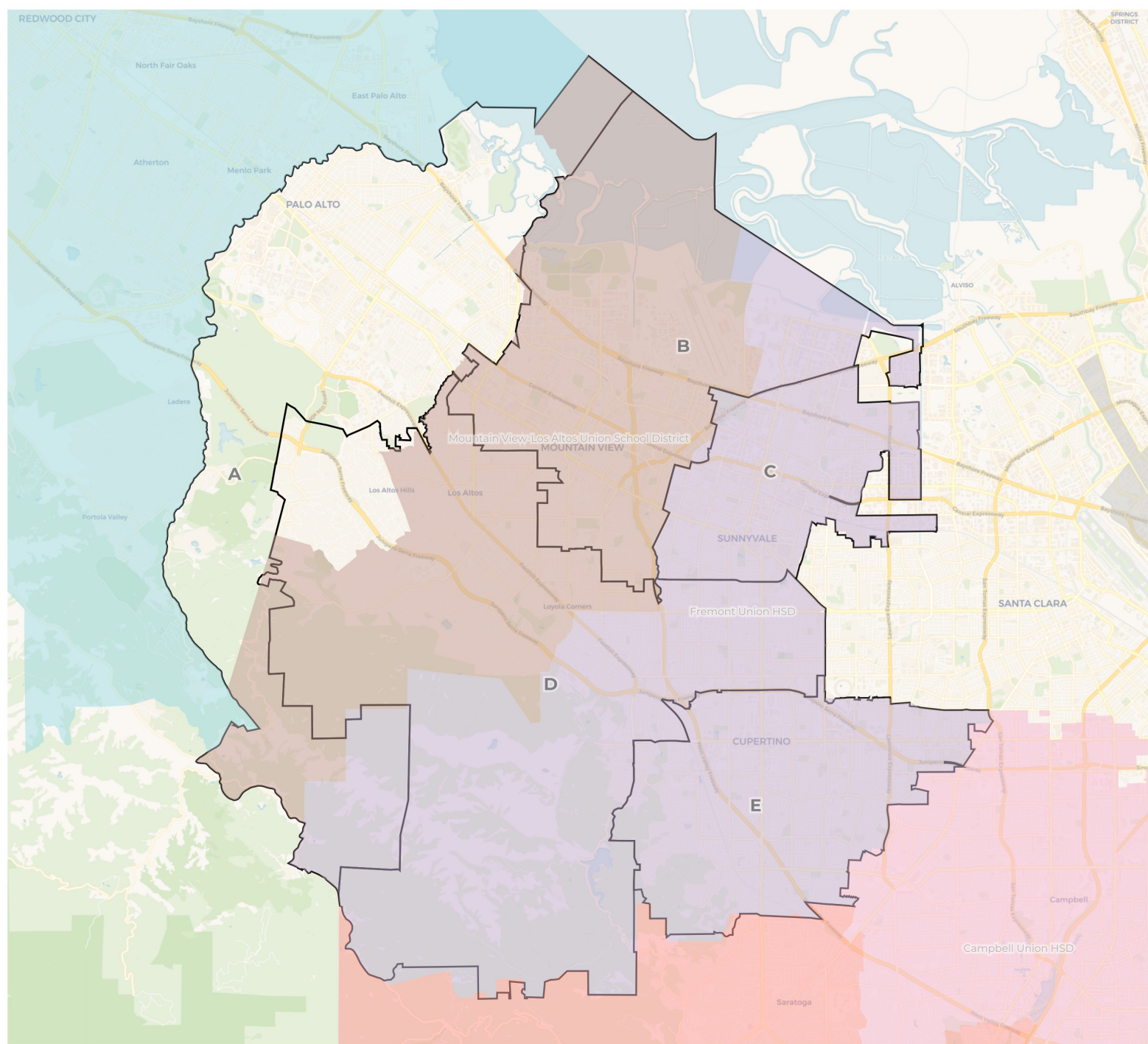




**REDISTRICTING
PARTNERS**

Foothill DeAnza CCD

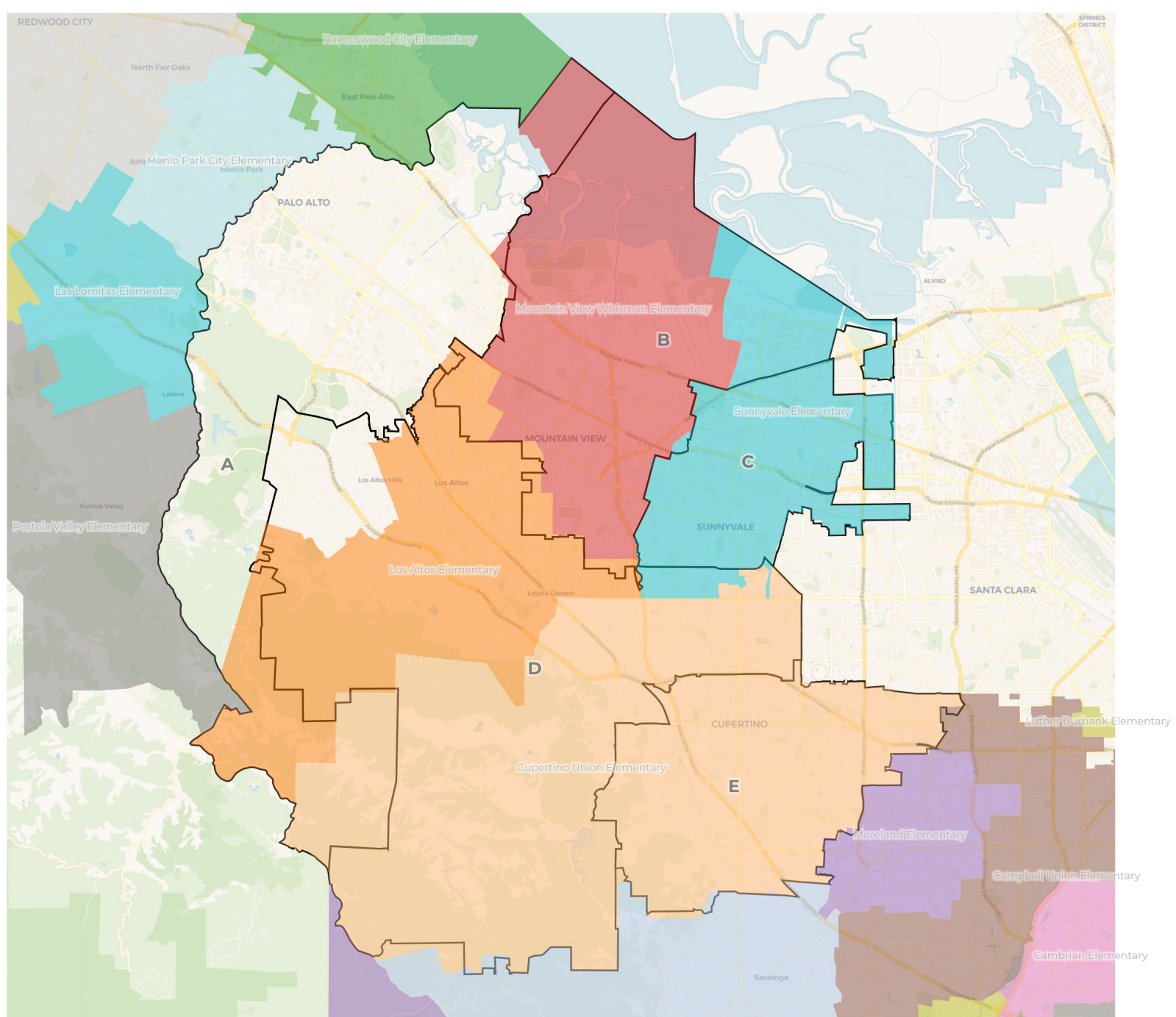
Plan A - HSD Overlay





**REDISTRICTING
PARTNERS**

Foothill DeAnza CCD
Draft Plan A - Elementary Dist

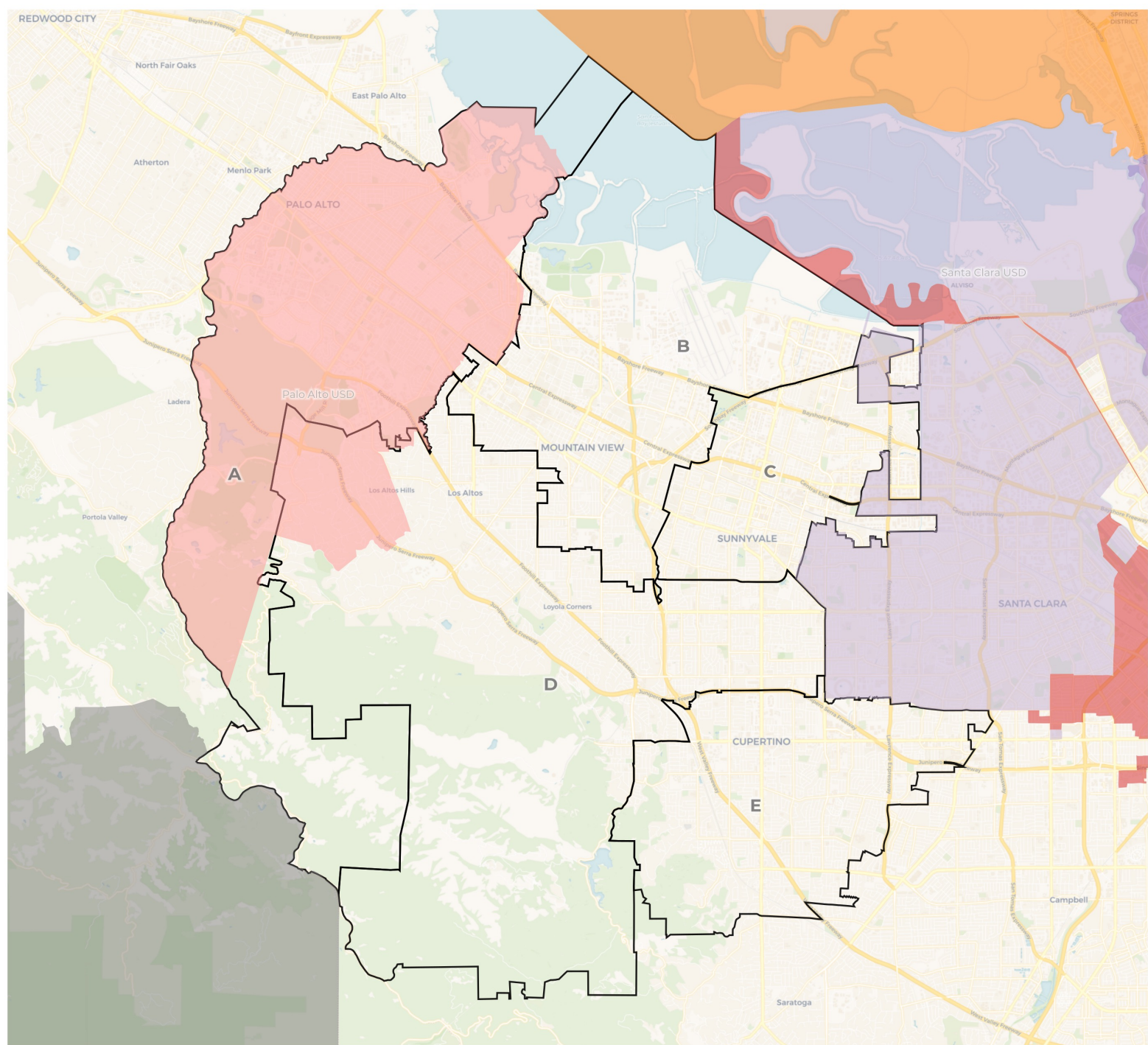




**REDISTRICTING
PARTNERS**

Foothill DeAnza CCD

Plan A - USD overlay



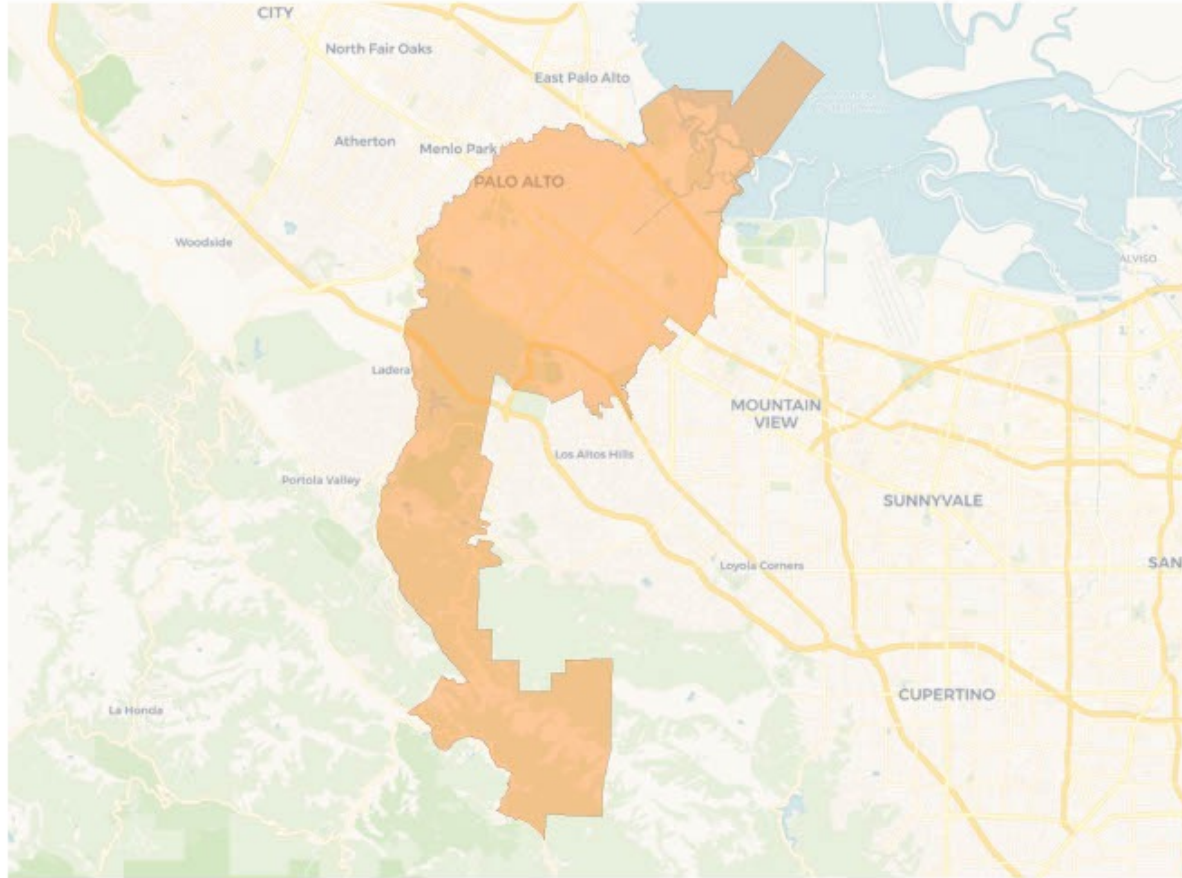
2020 Census

	A	B	C	D	E
Population	89,981	87,776	89,322	90,180	93,994
Deviation	-270	-2,475	-929	-71	3,743
Deviation %	-0.3%	-2.7%	-1.0%	-0.1%	4.1%
Other	50,668	41,122	26,876	42,881	21,702
Other %	56.3%	46.8%	30.1%	47.6%	23.1%
Latino	7,599	14,726	17,645	5,567	4,511
Latino %	8.4%	16.8%	19.8%	6.2%	4.8%
Asian	29,459	30,636	43,437	40,993	67,095
Asian %	32.7%	34.9%	48.6%	45.5%	71.4%
Black	2,255	1,292	1,364	739	686
Black %	2.5%	1.5%	1.5%	0.8%	0.7%

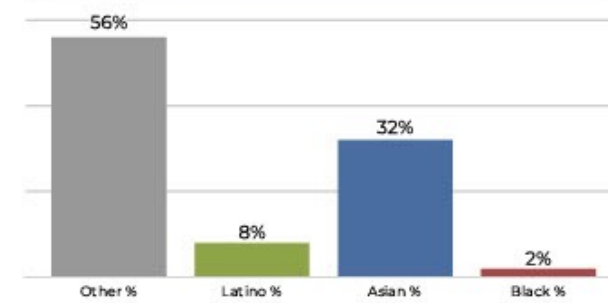
Citizen Voting Age Population (CVAP)

	A	B	C	D	E
Total CVAP	54,639	48,985	43,113	52,448	51,620
Other CVAP	35,736	29,603	19,894	31,284	18,135
Other CVAP %	65.4%	60.4%	46.1%	59.6%	35.1%
Latino CVAP	3,835	5,319	7,820	2,581	2,320
Latino CVAP %	7.0%	10.9%	18.1%	4.9%	4.5%
Asian CVAP	13,686	12,867	14,384	18,001	30,294
Asian CVAP %	25.0%	26.3%	33.4%	34.3%	58.7%
Black CVAP	1,382	1,196	1,015	582	871
Black CVAP %	2.5%	2.4%	2.4%	1.1%	1.7%

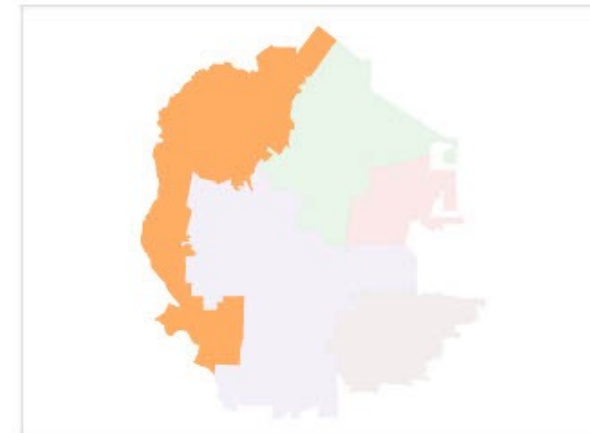
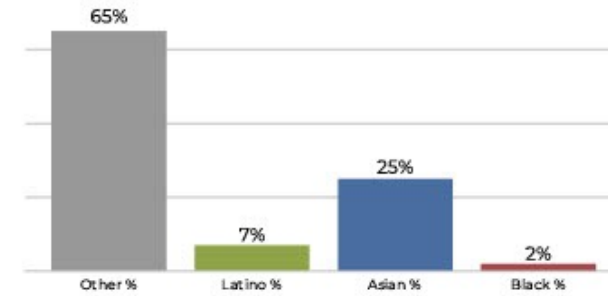
District A



2020 Census

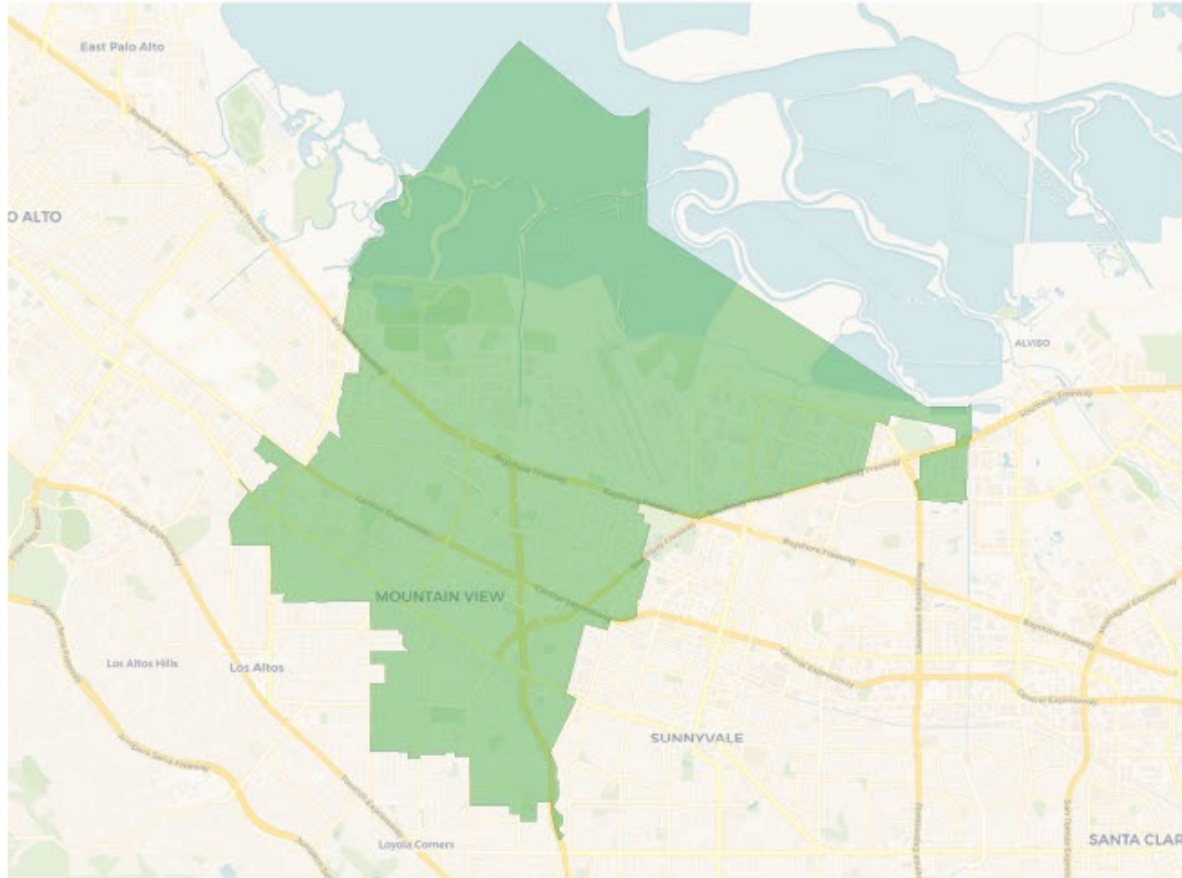


Citizen Voting Age Population

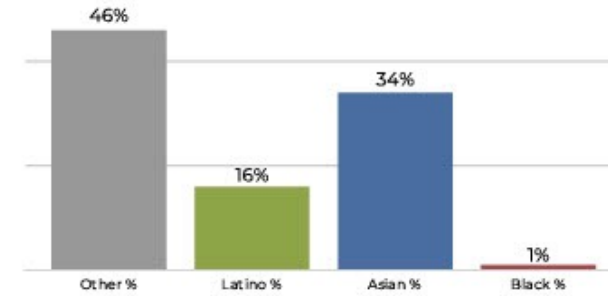


Population	Deviation	Deviation %	Other	Other %	Latino	Latino %	Asian	Asian %	Black	Black %
89,981	-270	-0.3%	50,668	56.3%	7,599	8.4%	29,459	32.7%	2,255	2.5%
Total CVAP	Other CVAP	Other CVAP %	Latino CVAP	Latino CVAP %	Asian CVAP	Asian CVAP %	Black CVAP	Black CVAP %		
54,639	35,736	65.4%	3,835	7.0%	13,686	25.0%	1,382	2.5%		

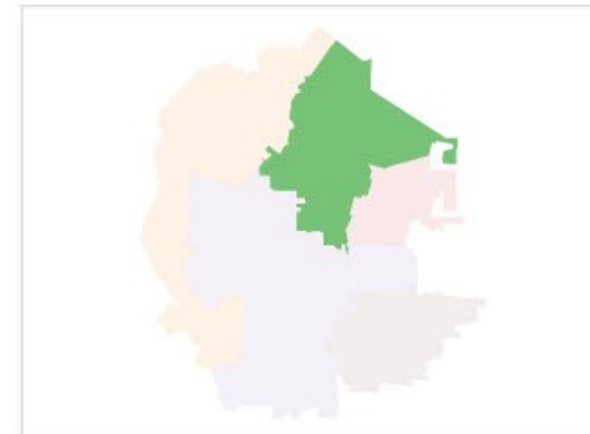
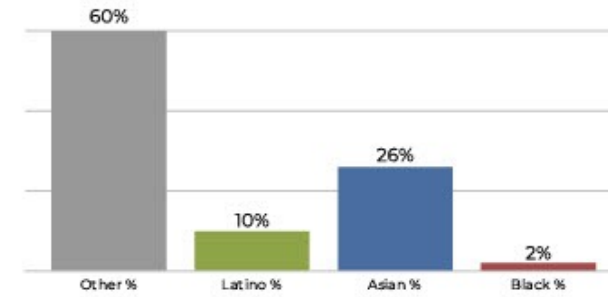
District B



2020 Census

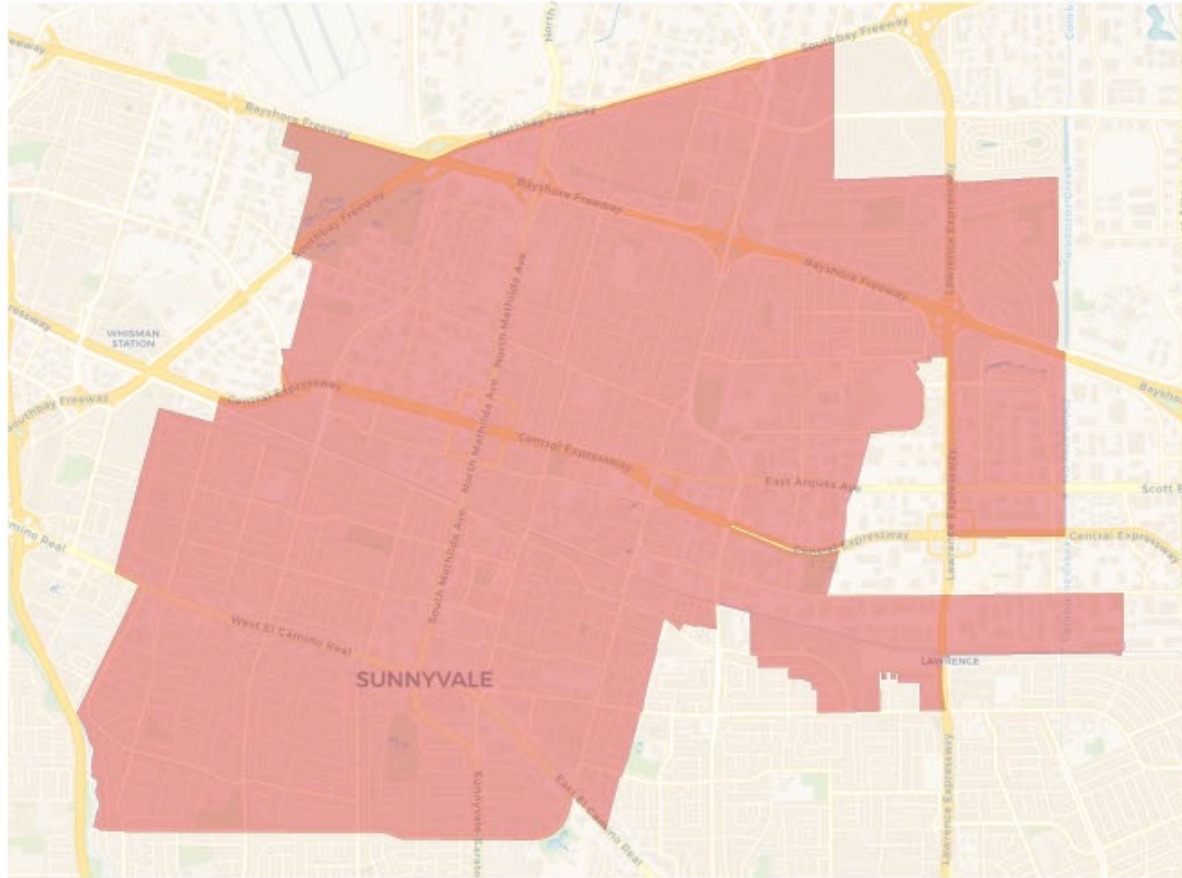


Citizen Voting Age Population

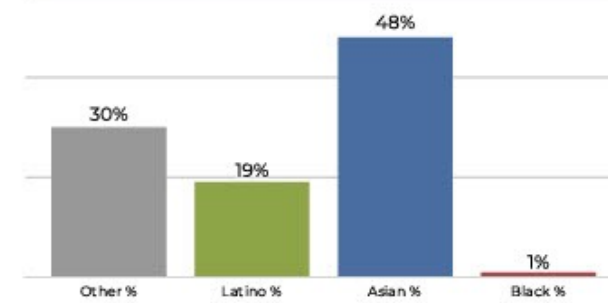


Population	Deviation	Deviation %	Other	Other %	Latino	Latino %	Asian	Asian %	Black	Black %
87,776	-2,475	-2.7%	41,122	46.8%	14,726	16.8%	30,636	34.9%	1,292	1.5%
Total CVAP	Other CVAP	Other CVAP %	Latino CVAP	Latino CVAP %	Asian CVAP	Asian CVAP %	Black CVAP	Black CVAP %		
48,985	29,603	60.4%	5,319	10.9%	12,867	26.3%	1,196	2.4%		

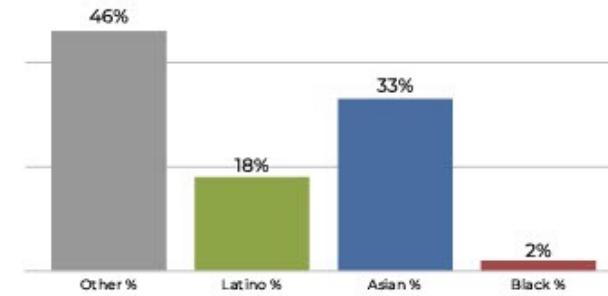
District C



2020 Census

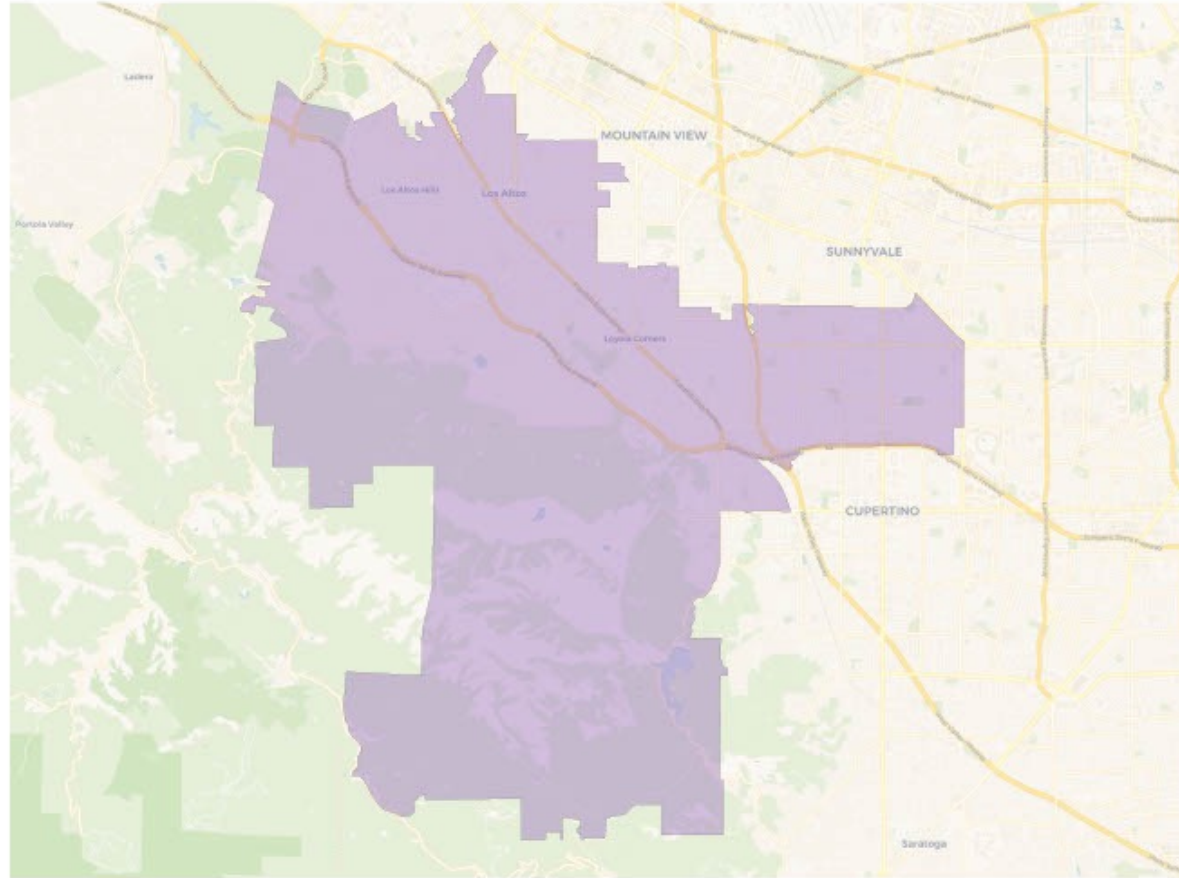


Citizen Voting Age Population

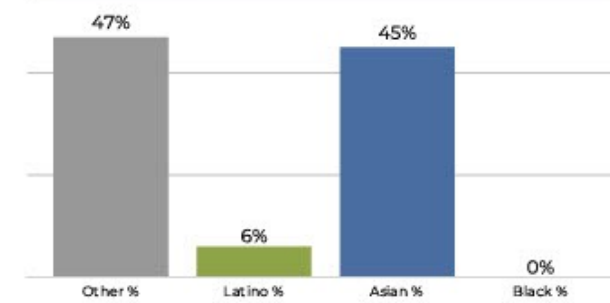


Population	Deviation	Deviation %	Other	Other %	Latino	Latino %	Asian	Asian %	Black	Black %
89,322	-929	-1.0%	26,876	30.1%	17,645	19.8%	43,437	48.6%	1,364	1.5%
Total CVAP	Other CVAP	Other CVAP %	Latino CVAP	Latino CVAP %	Asian CVAP	Asian CVAP %	Black CVAP	Black CVAP %		
43,113	19,894	46.1%	7,820	18.1%	14,384	33.4%	1,015	2.4%		

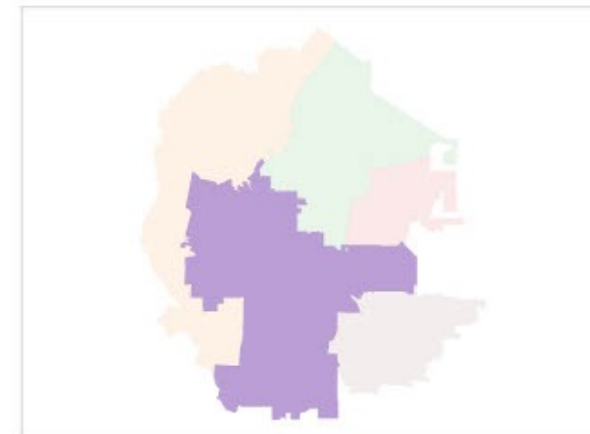
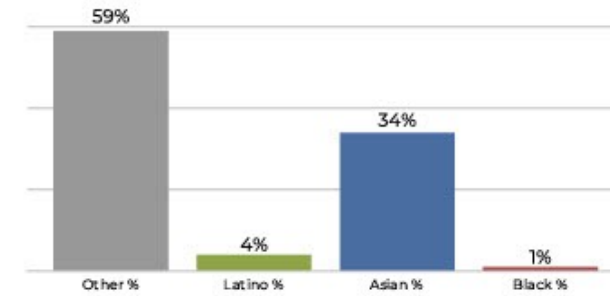
District D



2020 Census

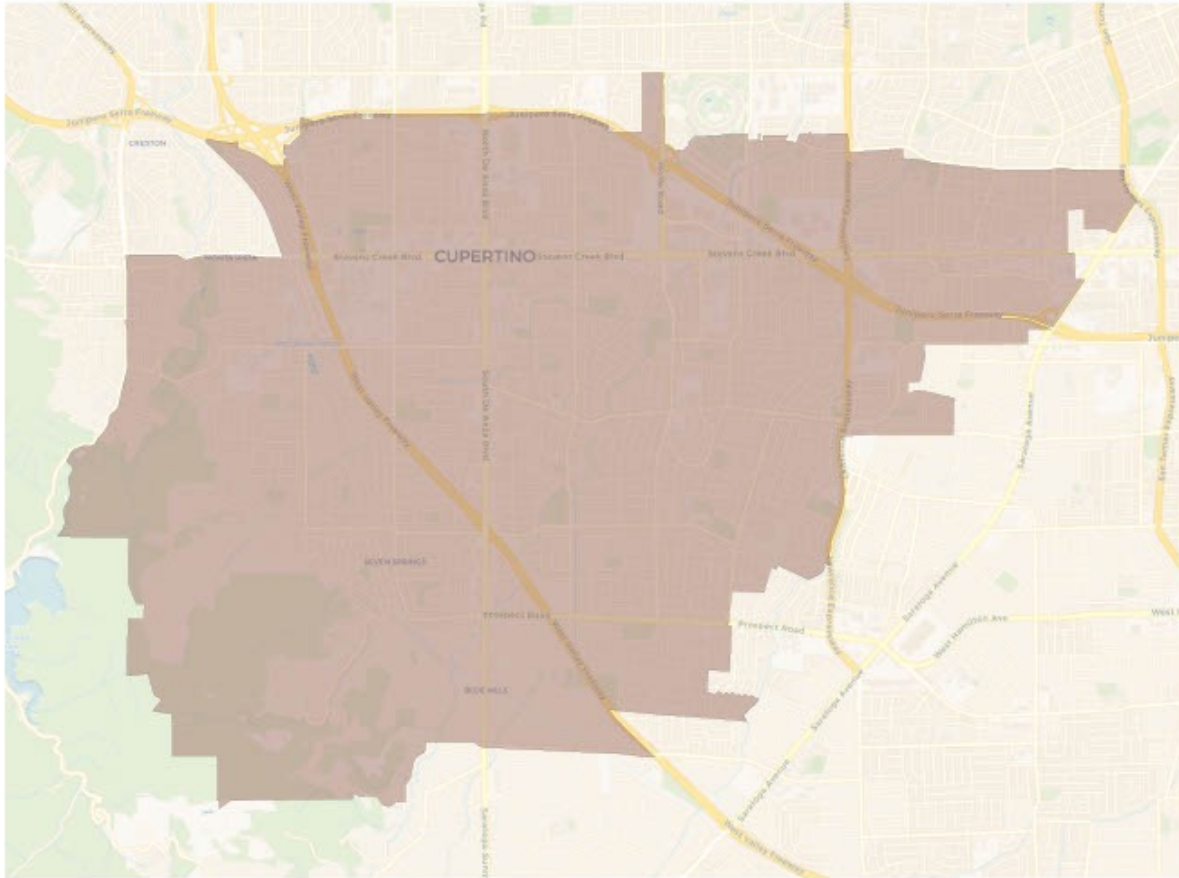


Citizen Voting Age Population

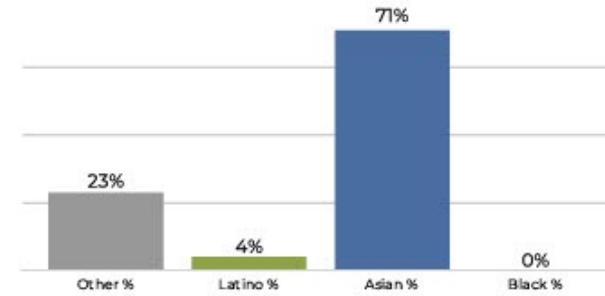


Population	Deviation	Deviation %	Other	Other %	Latino	Latino %	Asian	Asian %	Black	Black %
90,180	-71	-0.1%	42,881	47.6%	5,567	6.2%	40,993	45.5%	739	0.8%
Total CVAP	Other CVAP	Other CVAP %	Latino CVAP	Latino CVAP %	Asian CVAP	Asian CVAP %	Black CVAP	Black CVAP %		
52,448	31,284	59.6%	2,581	4.9%	18,001	34.3%	582	1.1%		

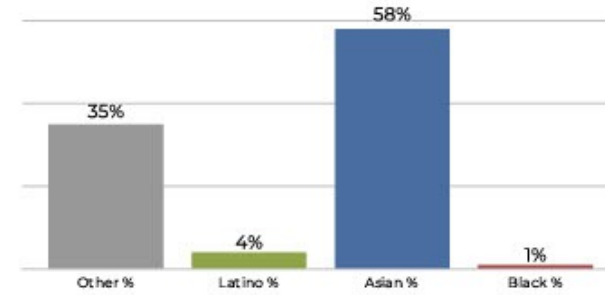
District E



2020 Census



Citizen Voting Age Population



Population	Deviation	Deviation %	Other	Other %	Latino	Latino %	Asian	Asian %	Black	Black %
93,994	3,743	4.1%	21,702	23.1%	4,511	4.8%	67,095	71.4%	686	0.7%
Total CVAP	Other CVAP	Other CVAP %	Latino CVAP	Latino CVAP %	Asian CVAP	Asian CVAP %	Black CVAP	Black CVAP %		
51,620	18,135	35.1%	2,320	4.5%	30,294	58.7%	871	1.7%		

